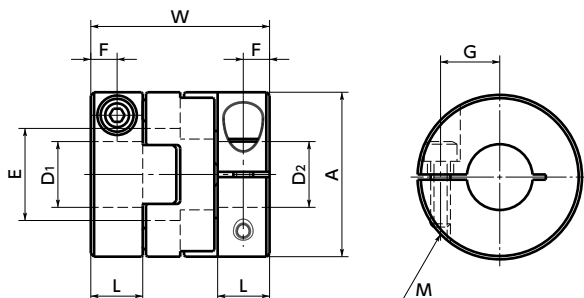


MOP-C



Dimensions

Unit : mm

Part Number	A	L	W	E	F	G	M	Screw Tightening Torque (N·m)
MOP-20C	20	7	22.1	10	3.5	6.5	M2.5	1
MOP-25C	25	8	27.2	14	4	9	M3	1.5
MOP-32C	32	10	33.3	18	5	11	M4	2.5

Part Number	Standard Bore Diameter D1 · D2						
	5	6	8	10	11	12	14
MOP-20C	●	●	●				
MOP-25C			●	●			
MOP-32C				●	●	●	●

- All products are provided with hex socket head cap screw.
- Recommended dimensional allowances of applicable shaft diameter are h6 and h7.
- In case of mounting on D-cut shaft, be careful about the position of the D-cut surface of the shaft. → P.257