

# MLR-C/MLRS-C Rigid coupling - Clamping type

WEB Selection Tool

WEB CAD Download



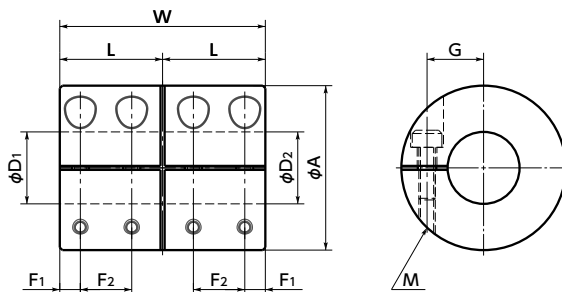
Zero Backlash



High Rigidity

SUS Stainless steel

**MLR-C** Made of aluminum alloy

**MLRS-C** Made of all stainless steel


## Dimensions

Unit : mm

Part Number	A	L	W	F1	F2	G	M	Screw Tightening Torque (N·m)	Standard Bore Diameter D1-D2						
<b>MLR-16C</b>	16	11	22	2.5	5.5	5	M2	0.5	5 - 5	5 - 6	6 - 6				
<b>MLR-20C</b>	20	12	24	2.5	6	7	M2	0.5	6 - 6	6 - 8	8 - 8				
<b>MLR-25C</b>	25	18	36	4.5	9	9	M2.5	1	8 - 8	8 - 10	10 - 10	12 - 12			
<b>MLR-32C</b>	32	20	40	4	10	11	M3	1.5	10 - 10	10 - 12	10 - 14	12 - 12	12 - 14	14 - 14	15 - 15
<b>MLRS-16C</b>	16	11	22	2.5	5.5	5	M2	0.5	5 - 5	5 - 6	6 - 6				
<b>MLRS-20C</b>	20	12	24	2.5	6	7	M2	0.5	6 - 6	6 - 8	8 - 8				
<b>MLRS-25C</b>	25	18	36	4.5	9	9	M2.5	1	8 - 8	8 - 10	10 - 10	12 - 12			
<b>MLRS-32C</b>	32	20	40	4	10	11	M3	1.5	10 - 10	10 - 12	10 - 14	12 - 12	12 - 14	14 - 14	15 - 15

- All products are provided with hex socket head cap screws.
- Recommended dimensional allowances of applicable shaft diameter are h6 and h7.
- In case of mounting on D-cut shaft, be careful about the position of the D-cut surface of the shaft. → P.257

Additional Keyway at Shaft Hole → P.788

Cleanroom Wash &amp; Packaging → P.792

Change to Stainless Steel Screw → P.790

Please feel free to contact us

Available / Add'l charge

Available / Add'l charge