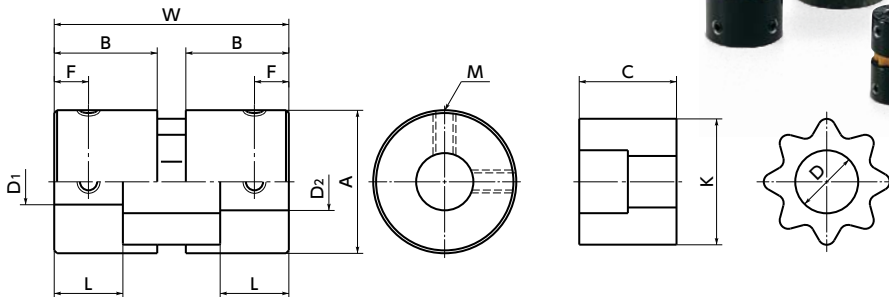




MSF



Dimensions

Unit : mm

Part Number	A	B	L	W	F	M	Screw Tightening Torque (N·m)	Sleeve			Standard Bore Diameter (dimensional allowance H8)								
								T	C	E	D1 · D2	3	4	5	6	6.35	8	10	12
MSF-16	16	12	8	27	4	M3	0.7	11	14	6 / 6	●	●	●	●	●	●			
MSF-20	20	15	10	34	5	M3	0.7	14	18	8 / 8			●	●	●	●	●		
MSF-25	25	18	12	41	6	M4	1.7	17	22	10 / 10			●	●	●	●	●	●	
MSF-32	32	21	14	48	7	M4	1.7	20	29	12 / 14					●	●	●	●	

- All products are provided with hex socket set screw.
- In a case where the bore diameter is φ 4 or less, the set screw is used in only one place.
- Recommended dimensional allowances of applicable shaft diameter are h6 and h7.

Performance

Part Number	Max. Bore Diameter (mm)	Rated*1 torque (N·m)	Max.*1 torque (N·m)	Max. Rotational Frequency (min ⁻¹)	Moment*2 of Inertia (kg·m ²)	Static Torsional Stiffness (N·m/rad)	Max. Lateral Misalignment (mm)	Max. Angular Misalignment (°)	Mass*2 (g)
MSF-16	8	0.5	1	39000	9.0×10 ⁻⁷	4.4	0.20	2	22
MSF-20	10	1	2	31000	2.7×10 ⁻⁶	9.5	0.20	2	42
MSF-25	12	1.5	3	25000	8.1×10 ⁻⁶	20	0.20	2	81
MSF-32	15	3	6	19000	2.5×10 ⁻⁵	52	0.20	2	150

- *1 Correction of rated torque and max. torque due to load fluctuation is not required. However, if ambient temperature exceeds 30°C, be sure to correct the rated torque and max. torque with temperature correction factor shown in the following table. The allowable operating temperature of [MSF] is -20°C to 60°C.
- *2 These are values with max. bore diameter.

• Ambient Temperature / Temperature Correction Factor

Ambient temperature	Temperature correction factor
-20°C to 30°C	1.00
30°C to 40°C	0.80
40°C to 60°C	0.70

• Part number specification

MSF-16-6-6.35 1 set



MSF-16-SLV Single Sleeve

