

XUT-C Flexible coupling - Cross joint - type - Clamping type

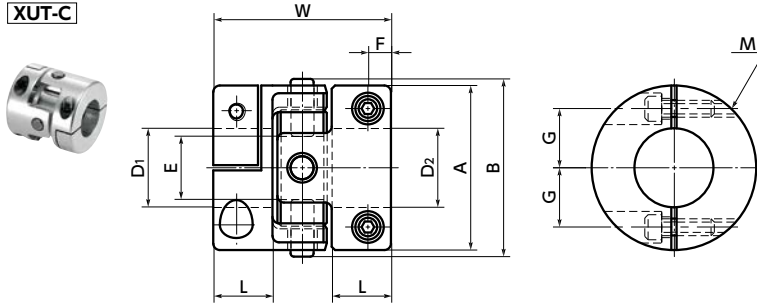
WEB Selection Tool

WEB CAD Download

High Rigidity

Vibration absorption

XUT-C



Dimensions

Unit : mm

| Part Number | A | B | L | W | E | F | G | M | Screw Tightening Torque (N·m) |
|-------------|----|----|------|----|----|-----|------|------|-------------------------------|
| XUT-15C | 15 | 16 | 6 | 18 | 4 | 2.5 | 5.2 | M2 | 0.5 |
| XUT-20C | 20 | 22 | 7 | 20 | 7 | 2.7 | 6.5 | M2 | 0.5 |
| XUT-25C | 25 | 27 | 9 | 27 | 10 | 3.5 | 9 | M2.5 | 1 |
| XUT-30C | 30 | 32 | 9.5 | 30 | 10 | 4 | 10.5 | M3 | 1.5 |
| XUT-35C | 35 | 37 | 11.5 | 35 | 13 | 5 | 12.5 | M4 | 2.5 |
| XUT-40C | 40 | 42 | 12.5 | 40 | 15 | 5.5 | 15 | M4 | 2.5 |

| Part Number | Standard Bore Diameter D1 · D2 | | | | | | | | | | | | | |
|-------------|--------------------------------|---|---|---|---|----|----|----|----|----|----|----|----|----|
| | 3 | 4 | 5 | 6 | 8 | 10 | 11 | 12 | 14 | 15 | 16 | 18 | 19 | 20 |
| XUT-15C | ● | ● | ● | ● | | | | | | | | | | |
| XUT-20C | | ● | ● | ● | ● | | | | | | | | | |
| XUT-25C | | | ● | ● | ● | ● | ● | ● | | | | | | |
| XUT-30C | | | | ● | ● | ● | ● | ● | ● | | | | | |
| XUT-35C | | | | | ● | ● | ● | ● | ● | ● | ● | | | |
| XUT-40C | | | | | ● | ● | ● | ● | ● | ● | ● | ● | ● | ● |

- All products are provided with hex socket head cap screw.
- Recommended dimensional allowances of applicable shaft diameter are h6 and h7.
- In case of mounting on D-cut shaft, be careful about the position of the D-cut surface of the shaft. → P.257

Additional Keyway at Shaft Hole → P.788

Available / Add'l charge

Cleanroom Wash & Packaging → P.792

Please feel free to contact us

Change to Stainless Steel Screw → P.790

Available / Add'l charge