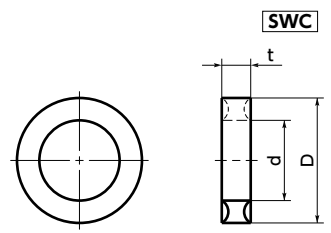
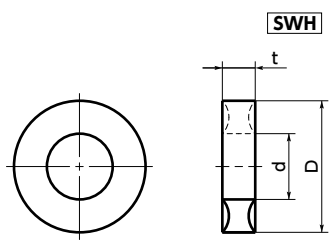
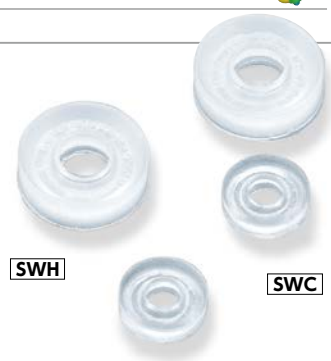


# SWH/SWC Locking and Sealing Rings

WEB Selection Tool    WEB CAD Download



**SWH** For Hex head screws and hex Nuts      Unit : mm

Part Number	Nominal	d	D	t	Mass (g)	Qty*1 per pack
<b>SWH-3</b>	3	3.2	8	2.2	0.1	10
<b>SWH-4</b>	4	4.15	9.5	2.6	0.1	10
<b>SWH-5</b>	5	5.15	10.6	3	0.2	10
<b>SWH-6</b>	6	6.5	12.7	3.5	0.3	10
<b>SWH-8</b>	8	8.1	16.2	4	0.6	5
<b>SWH-10</b>	10	10.2	19.6	4.5	1	5
<b>SWH-12</b>	12	12.2	23.6	5	1.5	5

\*1 The minimum order quantity is 1 piece. → P.794

**SWC** For Socket Head Cap Screws      Unit : mm

Part Number	Nominal	d	D	t	Mass (g)	Qty*1 per pack
<b>SWC-4</b>	4	4.1	7.7	2	0.1	10
<b>SWC-5</b>	5	5.15	9.8	3	0.2	10
<b>SWC-6</b>	6	6.5	10.5	2.5	0.2	10
<b>SWC-8</b>	8	8.1	14	3.3	0.3	10
<b>SWC-10</b>	10	10.2	17	3.8	0.5	10
<b>SWC-12</b>	12	12.2	19	4.4	0.7	5

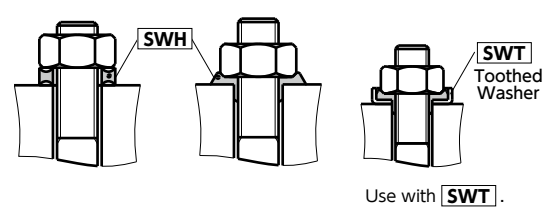
\*1 The minimum order quantity is 1 piece. → P.794

- For sealing of the bolt tightening section.
- **SWH** — For hex head screws and hex nuts
- **SWC** — For socket head cap screws
- Max. Operating Temperature : -60 to 80 deg C
- Also, **SWT** Toothed Washer for locking and sealing rings is available.

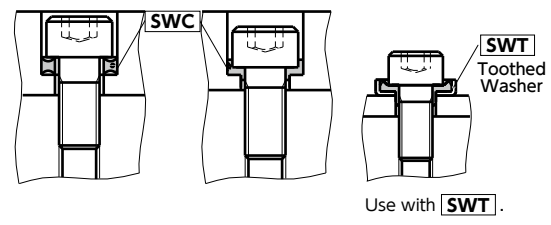


- Application  
Thread Locking and Thread Sealing
  - Material/Finish RoHS Compliant
- |           | SWH               | SWC               |
|-----------|-------------------|-------------------|
| Main Body | Polyamide (White) | Polyamide (White) |

- Installation Method
- Before Tightening    • After Tightening



- Before Tightening    • After Tightening



- Part number specification

## SWC-10



Order in number of packs.  
The minimum order quantity is 1 piece. → P.794

Individual Sales → P.794	Cleanroom Wash & Packaging → P.792	Screw Length Adjustment → P.796	Vibration Resistant → P.795	Modification process for captive use → P.791
Available / Add'l charge	Not Available	Not Available	Not Available	Not Available