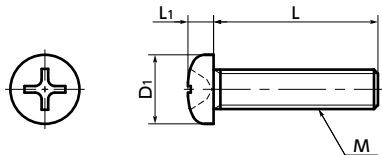




# SPC-P Plastic Screw - Cross Recessed Pan Head Machine Screws - PC

WEB Selection Tool    WEB CAD Download



● Material/Finish

RoHS Compliant

| SPC-P                         |                                   |
|-------------------------------|-----------------------------------|
| Main body                     | PC (Polycarbonate) / Transparent* |
| Heat Resistance Temperature** | 115°C                             |

\* **SPC-M1.7-3-P** **SPC-M1.7-4-P** are black.

\*\*This is the value for the plastic material. The maximum operating temperature of the product changes with performance conditions such as tightening torque.

- PC (polycarbonate) has the highest shock resistance of engineering plastics.
- Max. Operating Temperature\*\* (min./max.): -40/115 deg C
- PC has low water absorbency and excellent weather resistance.
- The properties and precautions of plastic screws → P.724
- Application

Electrical and electronic equipment and automobiles

Unit : mm

| Part Number       | M    | L |   |   |   |   |    |    |    |    |    | D1 | L1   | Tension*1<br>Rupture Load (N) | Torsional*1<br>Torque (N·m) | Mass (g) |                 |
|-------------------|------|---|---|---|---|---|----|----|----|----|----|----|------|-------------------------------|-----------------------------|----------|-----------------|
| <b>SPC-M1.7-P</b> | M1.7 | 3 | 4 |   |   |   |    |    |    |    |    |    | 2.5  | 0.5                           | 47                          | 0.02     | 0.0066 - 0.0085 |
| <b>SPC-M2-P</b>   | M2   | 3 | 4 | 5 | 6 |   |    |    |    |    |    |    | 3.5  | 1.3                           | 112                         | 0.05     | 0.02 - 0.028    |
| <b>SPC-M3-P</b>   | M3   |   |   | 5 | 6 | 8 | 10 | 12 | 15 |    |    |    | 5.5  | 2                             | 300                         | 0.22     | 0.075 - 0.14    |
| <b>SPC-M4-P</b>   | M4   |   |   |   | 6 | 8 | 10 | 12 | 15 |    |    |    | 7    | 2.6                           | 515                         | 0.54     | 0.16 - 0.27     |
| <b>SPC-M5-P</b>   | M5   |   |   |   |   |   | 10 | 12 | 15 | 20 |    |    | 9    | 3.3                           | 750                         | 1.03     | 0.38 - 0.56     |
| <b>SPC-M6-P</b>   | M6   |   |   |   |   |   | 10 | 12 | 15 | 20 | 25 |    | 10.5 | 3.9                           | 1080                        | 1.37     | 0.6 - 1         |

\*1 Values in chart are for reference only. They are not guaranteed values. The recommendation torque is 50% of the torsional torque.

● M1.7 is black.

| Part Number       | Qty per pack*1 |
|-------------------|----------------|
| <b>SPC-M1.7-P</b> | 50             |
| <b>SPC-M2-P</b>   | 50             |
| <b>SPC-M3-P</b>   | 50             |
| <b>SPC-M4-P</b>   | 50             |
| <b>SPC-M5-P</b>   | 50             |
| <b>SPC-M6-P</b>   | 20             |

\*1 The minimum order quantity is 1 piece. → P.794

● Part number specification

## SPC-M5-20-P

Product Code **1**    Product Code **2**

Order in number of packs.  
The minimum order quantity is 1 piece. → P.794

|                          |                                    |                                 |                             |  |
|--------------------------|------------------------------------|---------------------------------|-----------------------------|--|
| Individual Sales → P.794 | Cleanroom Wash & Packaging → P.792 | Screw Length Adjustment → P.796 | Vibration Resistant → P.795 | Modification process for captive use → P.791 |
| Available / Add'l charge | Available / Add'l charge           | Available / Add'l charge        | Not Available               | Not Available                                |