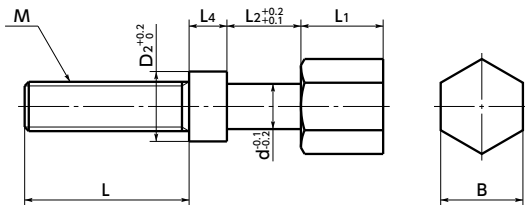


SAT Adjust Bolt



WEB Selection Tool

WEB CAD Download



- For work and jig locating and centering, etc.
- Please combine with the block **SAK-A** **SAK-B**.
→ P.540
- Adjust bolt **SAT** and block **SAK-A** **SAK-B** combination

Part Number	Blocks for applicable adjust bolt	
SAT-M6	SAK-6-A	SAK-6-B
SAT-M8	SAK-8-A	SAK-8-B
SAT-M10	SAK-10-A	SAK-10-B
SAT-M12	SAK-12-A	SAK-12-B

- Material/Finish RoHS Compliant

	SAT
Main body	S45C Nickel Plating

Unit : mm

Part Number	M (coarse) 1	L 2						L4	L1	D2	B	d	L2	Mass (g)
SAT-M6	M6	20	30	35	40	50		4.6	10	8.5	10	5.5	9	14 - 20.5
SAT-M8	M8		30		40	50	60	6	15	11.5	13	7.5	12	36 - 48
SAT-M10	M10		30		40	50	60	7	15	15.5	17	9.5	16	64 - 82
SAT-M12	M12		30		40	50	60	7	20	17.5	19	11.5	19	100 - 125

- Part number specification

SAT - M8 - 40

Product Code 1 2

Cleanroom Wash & Packaging → P.792	Screw Combination → P.798	Screw Length Adjustment → P.796	Vibration Resistant → P.795
Not Available	Not Available	Available / Add'l charge	Available / Add'l charge