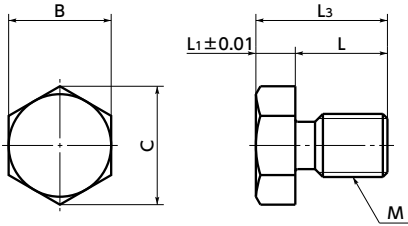


# SPM Stop Pin


[WEB Selection Tool](#)
[WEB CAD Download](#)


- Use this as a recipient of the stopper bolt **SSB-A** (→ P.532) **SSB-B** (→ P.533) and stopper screw **SAN-B** (→ P.536).
- The hexagon head end face has already been quenched. It is highly abrasion-resistant.

### Material/Finish

RoHS Compliant

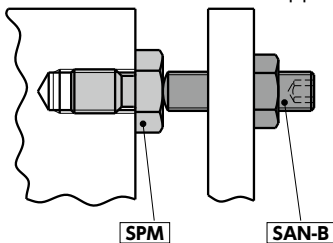
	SPM
Main body	S45C end face quenching (hardness: 35 HRC or above) - Polishing Trivalent Chromate Treatment

Unit : mm

Part Number	M (coarse)	L3	L1	L	B	C	Mass (g)
<b>SPM-M3</b>	M3	7	2	5	6	6.9	0.6
<b>SPM-M4</b>	M4	8.8	2.8	6	7	8.1	1.3
<b>SPM-M5</b>	M5	10.5	3.5	7	8	9.2	2.4
<b>SPM-M6</b>	M6	12	4	8	10	11.5	4.5
<b>SPM-M8</b>	M8	15	5	10	13	15	9.5
<b>SPM-M10</b>	M10	20	6	14	17	19.6	20
<b>SPM-M12</b>	M12	23	7	16	19	21.9	31

### Usage example

In combination with a stopper screw **SAN-B**.



### Part number specification

## SPM-M10

Product Code



Cleanroom Wash & Packaging → P.792	Screw Combination → P.798	Screw Length Adjustment → P.796	Vibration Resistant → P.795
Not Available	Not Available	Not Available	Available / Add'l charge