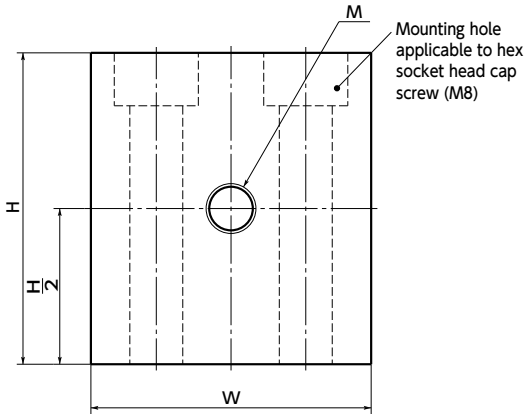
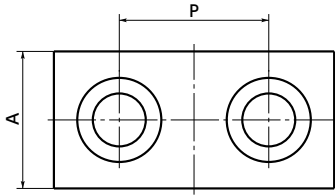


# SBN Locating Block



WEB Selection Tool

WEB CAD Download



- Please combine with Stopper Bolt **SSB-A** (→ P.532) **SSB-B** **SSBS-B** (→ P.533) used for locating.

- Material/Finish

RoHS Compliant

	<b>SBN</b>
Main body	SS400 Nickel Plating

Part Number	M (coarse)	H	W	P	A	Mass (g)
<b>SBN-6-30-A</b>	M6	30	45	24	22	192
<b>SBN-8-30-A</b>	M8	30	45	24	22	172
<b>SBN-10-30-A</b>	M10	30	50	28	22	167
<b>SBN-12-30-A</b>	M12	30	50	28	22	134

Unit : mm

- Part number specification

## SBN - 10 - 30 - A

Product Code Coarse Thread Type

Cleanroom Wash & Packaging → P.792	Screw Combination → P.798	Screw Length Adjustment → P.796	Vibration Resistant → P.795
Not Available	Not Available	Not Available	Please feel free to contact us