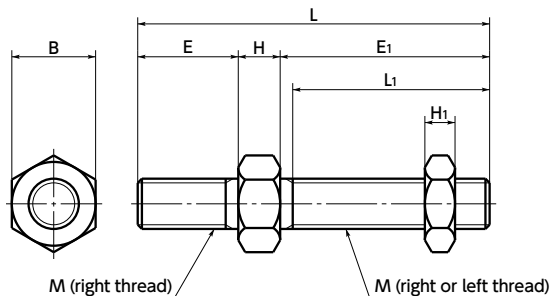


# SHS Hexagon Stud Bolt



WEB Selection Tool    WEB CAD Download



- For rod end shaft bearing height adjustment, etc.
- Right thread or left thread can be selected according to the end symbol of the part number.

**SHS-R** — Right thread

**SHS-L** — Left thread

- All products are provided with hexagon nuts (3 types).

- Material/Finish

RoHS Compliant

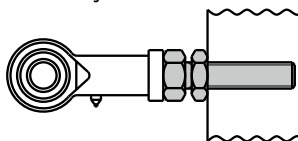
	SHS
Main body	S45C (hardness: 35 - 40 HRC) Ferrosoferric Oxide Film (Black)
Nut	SS400 Ferrosoferric Oxide Film (Black)

**SHS-R** Right thread    **SHS-L** Left thread

Unit : mm

Part Number	M (coarse)	L <sub>1</sub>	E <sub>1</sub>	E	H	H <sub>1</sub>	L	B	Mass (g)
<b>SHS-M4-R</b>	M4	16.5	18	8	3.2	2.4	29.2	7	4
<b>SHS-M6-R</b>	M6	23.5	25	12	5	3.6	42	10	10
<b>SHS-M8-R</b>	M8	31	33	16	6.5	5	55.5	13	25
<b>SHS-M10-R</b>	M10	39	41	20	8	6	69	17	45
<b>SHS-M12-R</b>	M12	47	49	24	10	7	83	19	80
<b>SHS-M16-R</b>	M16	57	60	32	13	10	105	24	170
<b>SHS-M4-L</b>	M4	16.5	18	8	3.2	2.4	29.2	7	4
<b>SHS-M6-L</b>	M6	23.5	25	12	5	3.6	42	10	10
<b>SHS-M8-L</b>	M8	31	33	16	6.5	5	55.5	13	25
<b>SHS-M10-L</b>	M10	39	41	20	8	6	69	17	45
<b>SHS-M12-L</b>	M12	47	49	24	10	7	83	19	80
<b>SHS-M16-L</b>	M16	57	60	32	13	10	105	24	170

- Usage example  
For adjustment of rod end shaft bearing.



- Part number specification

**SHS-M10-R**

Product Code

Cleanroom Wash & Packaging → P.792	Screw Length Adjustment → P.796	Vibration Resistant → P.795	Laser Marking → P.806
Not Available	Available / Add'l charge	Available / Add'l charge	Not Available