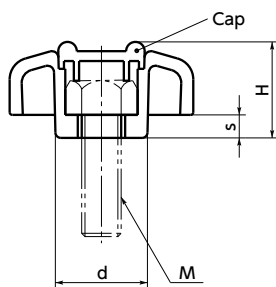
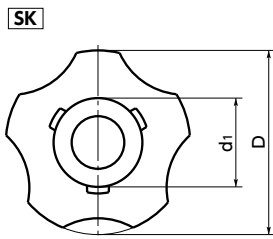
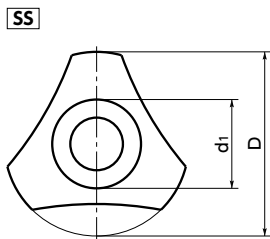


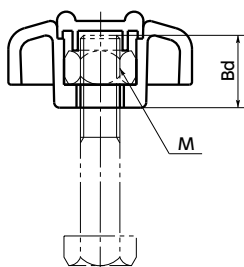
# SS / SK Super Knob



WEB Selection Tool    WEB CAD Download



Hexagon Head Bolt → Male Screw Knob



Hexagon Nut → Female Screw Knob



- Any commercially available hexagon head bolt and type-three hexagon nut can be used regardless of manufacturers and materials. You can make a knob easily by just inserting them.
- Especially for hexagon head bolts, any thread length can be selected.
- There are two types: triangular knob **SS** and pentagon knob **SK**.
- Two cap colors are white and yellow. They can be selected by the end symbol of the part number.

End Symbol	Cap color
<b>YW</b>	Yellow
<b>WH</b>	White

- Material/Finish RoHS Compliant

	SS	SK
knob	Nylon 66 (Black)	Nylon 66 (Black)
Cap	Nylon 66 (Various Color)	Nylon 66 (Various Color)

- Assembling method
  - Securely fit a hexagon head bolt and hexagon nut into the hexagon socket of the knob main body.
  - Next, fit the cap. Fit two of the three hooks in.
  - Press in the remaining one by using a screwdriver or a paddle.

For female screw knob, pay attention to the male screw and tightening dimensions (Bd dimension of the drawing). The cap may come off.

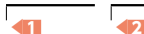
**SS** Triangular Knob    **SK** Pentagon Knob

Unit : mm

Part Number	D	M (Coarse)	H	s	d <sub>1</sub>	d	Bd	Mass (g)
<b>SS-37</b>	38	M6	16.5	3.4	15.2	16	14	5
<b>SS-42</b>	42	M8	19	4.5	18.2	20	15	10
<b>SS-47</b>	47	M10	23.2	5.9	21.8	24	18	15
<b>SK-34</b>	35.2	M6	16.5	3.2	15.2	16	14	5
<b>SK-38</b>	39.6	M8	19	4.5	18.2	20	15	10
<b>SK-43</b>	45	M10	23.2	6	21.8	24	18	15
<b>SK-53</b>	53	M12	22.3	4	24.8	27	14	20

- Part number specification

**SS-37-YW**



Cleanroom Wash & Packaging → P.792	Screw Combination → P.798	Screw Length Adjustment → P.796	Vibration Resistant → P.795	Laser Marking → P.806
Not Available	Not Available	Not Available	Not Available	Available / Add'l charge