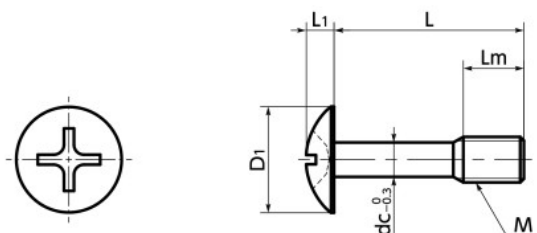


SSCMS Cross Recessed Truss Head Captive Screws

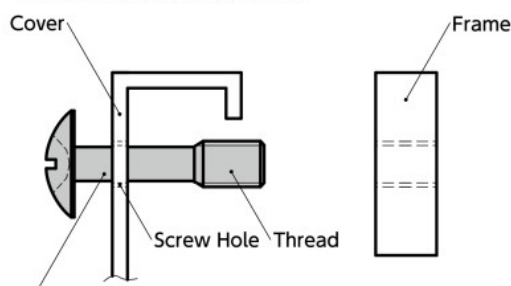


SUS Stainless steel



● Installation example

Make a screw hole in the cover, then pass **SSCMS** thread through it. Even when the screw is removed from the frame, **SSCMS** does not fall out from the cover because **SSCMS** thread catches on the screw hole of the cover.



SSCMS Cross Recessed Truss Head Captive Screw

- The shape of the screws prevent them from falling out and loss. They are intended to fix protective and inspection covers that are frequently installed and removed.
- These screws have large heads that decorate attachment surfaces beautifully.
- These items comply with CE marking requirements.

● Application

Securement of protective and inspection covers and compliance with CE marked products
Machine tools, food industry machines, and electrical and electronic equipment

● Material/Finish



	SSCMS
Main Body	SUSXM7 (Equivalent to SUS304)
Strength Class	A2-50

⚠ Precautions for Use

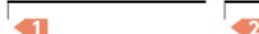
- The inner diameter of the screw hole of the cover must be equal or larger than dimension dc.
- The thickness of the cover must be 0.8 mm or more.

Unit : mm

Part Number 1	M (Coarse)		L 2							Lm	D1	L1	dc	Cross-recessed Socket Number	Mass (g)	
	Nominal of Thread	Pitch	8	10	12	16	20	25	30							40
SSCMS-M3	M3	0.5	8	10	12	16					4	6.9	1.9	2.2	1	0.61 - 0.94
SSCMS-M4	M4	0.7		10	12	16	20				5	9.4	2.5	3	2	1.4 - 2.2
SSCMS-M5	M5	0.8			12	16	20	25			6	11.8	3.1	3.9	2	3.1 - 4.7
SSCMS-M6	M6	1			12	16	20	25	30		8	14	3.7	4.6	3	4.4 - 7.5
SSCMS-M8	M8	1.25				16	20	25	30	40	10	17.8	4.8	6.3	3	10 - 18

● Part number specification

SSCMS-M6-12



1 Individual Sales 1 piece in 1 pack	Cleanroom Wash & Packaging Available / Add'l charge	Screw Length Adjustment Not Available	Vibration Resistant Not Available	Modification process for captive use with Captive Processing
---	--	--	--------------------------------------	---