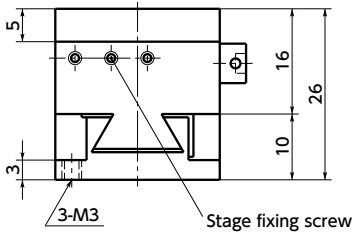
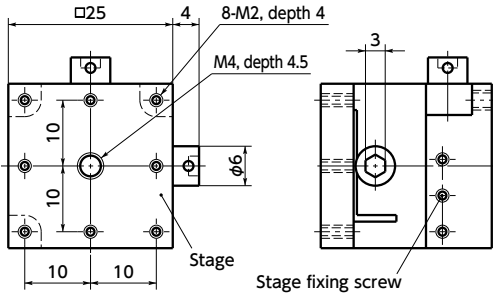
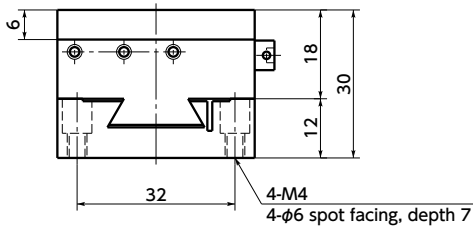
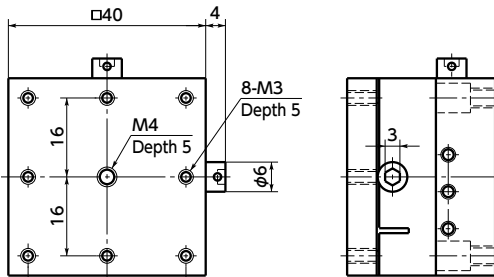


TAS-252



TAS-402



- Two axes (X and Y axes) can be moved.
- A stage to move by a hexagon wrench.
- Screws are used for micromotion feed.
- Dovetail groove method is adopted for the travel guide. A rattle correction function is provided.
- New design with low stage height. Effective when there is space constraints or for assembly.

Material/Finish

RoHS Compliant

TAS	
Main body	Brass Black chrome plating

Mounting

Spot facing is performed on the screw hole for mounting. Therefore, fixing from vertical directions is possible.

Fixing from above

TAS-252 — M2

TAS-402 — M3

Fixing from beneath

TAS-252 — M3

TAS-402 — M4

Part number specification

TAS-252



Part Number	Stage Face	Travel Guide	Travel distance	Screw Pitch	Mass (g)
TAS-252	25×25	Dovetail Groove Method	±3	0.5	110
TAS-402	40×40	Dovetail Groove Method	±7	0.5	300

Unit : mm

Part Number	Straightness	Parallelism	Position Resolution	Withstand load (N)
TAS-252	0.01	0.1	0.01	49
TAS-402	0.01	0.1	0.01	98.1

Unit : mm

- Hexagon wrench for stage operations, hexagonal wrench with a knob and pan head machine screws for mounting (M2 x 6 **TAS-252** and M3 x 8 **TAS-402**) are provided.