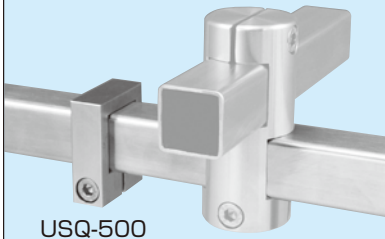


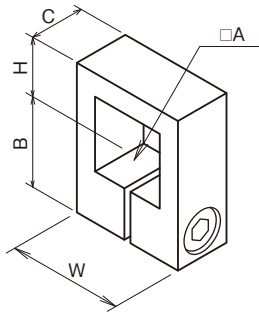
### USQ-500

for slip prevention or stopper for variable range



USQ-500

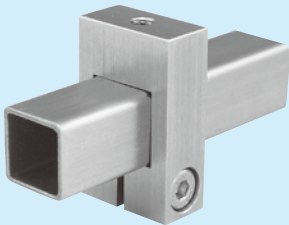
### Stopper



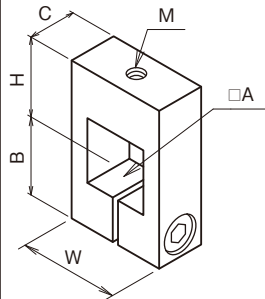
| SUS 304   | □A  | B  | H  | C  | W  | Cap screw |
|-----------|-----|----|----|----|----|-----------|
| USQ10-500 | □10 | 13 | 10 | 10 | 20 | M4        |
| USQ12-500 | □12 | 16 | 10 | 10 | 20 | M4        |
| USQ13-500 | □13 | 16 | 10 | 10 | 20 | M4        |
| USQ16-500 | □16 | 19 | 13 | 12 | 25 | M5        |
| USQ19-500 | □19 | 21 | 15 | 12 | 30 | M5        |
| USQ20-500 | □20 | 21 | 15 | 12 | 30 | M5        |

### USQ-503-6

for parts attachment can be mounted freely using two pieces



### Rect-screw



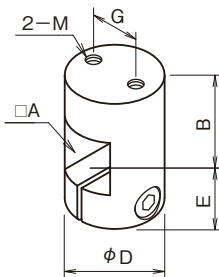
| SUS 304   | □A  | B  | H  | C  | W  | M  | Cap screw |
|-----------|-----|----|----|----|----|----|-----------|
| USQ10-503 | □10 | 13 | 15 | 10 | 20 | M3 | M4        |
| USQ10-504 |     |    |    |    |    | M4 |           |
| USQ12-503 | □12 | 16 | 14 | 10 | 20 | M3 | M4        |
| USQ12-504 |     |    |    |    |    | M4 |           |
| USQ13-503 | □13 | 16 | 16 | 10 | 20 | M3 | M4        |
| USQ13-504 |     |    |    |    |    | M4 |           |
| USQ16-504 | □16 | 19 | 20 | 12 | 25 | M4 | M5        |
| USQ16-505 |     |    |    |    |    | M5 |           |
| USQ19-505 | □19 | 21 | 25 | 12 | 30 | M5 | M5        |
| USQ19-506 |     |    |    |    |    | M6 |           |
| USQ20-505 | □20 | 21 | 25 | 12 | 30 | M5 | M5        |
| USQ20-506 |     |    |    |    |    | M6 |           |

### USQ-223-6

for board or functional device attachment by two screws (right angle against shaft)



### Rect-screw



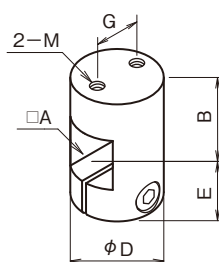
| SUS 304   | □A  | φD  | E    | B    | G  | 2-M | Cap screw |
|-----------|-----|-----|------|------|----|-----|-----------|
| USQ10-223 | □10 | φ19 | 14.5 | 16.5 | 8  | M3  | M4        |
| USQ10-224 |     |     |      |      |    | M4  |           |
| USQ12-223 | □12 | φ22 | 15.5 | 17.5 | 12 | M3  | M4        |
| USQ12-224 |     |     |      |      |    | M4  |           |
| USQ13-223 | □13 | φ22 | 15.5 | 17.5 | 13 | M3  | M4        |
| USQ13-224 |     |     |      |      |    | M4  |           |
| USQ16-224 | □16 | φ25 | 19   | 21   | 15 | M4  | M5        |
| USQ16-225 |     |     |      |      |    | M5  |           |
| USQ19-225 | □19 | φ29 | 21.5 | 25   | 15 | M5  | M5        |
| USQ19-226 |     |     |      |      |    | M6  |           |
| USQ20-225 | □20 | φ29 | 21.5 | 25   | 15 | M5  | M5        |
| USQ20-226 |     |     |      |      |    | M6  |           |

### USQ-233-6

for board or functional device attachment by two screws (parallel with shaft)



### Rect-screw



| SUS 304   | □A  | φD  | E    | B    | G  | 2-M | Cap screw |
|-----------|-----|-----|------|------|----|-----|-----------|
| USQ10-233 | □10 | φ19 | 14.5 | 16.5 | 8  | M3  | M4        |
| USQ10-234 |     |     |      |      |    | M4  |           |
| USQ12-233 | □12 | φ22 | 15.5 | 17.5 | 12 | M3  | M4        |
| USQ12-234 |     |     |      |      |    | M4  |           |
| USQ13-233 | □13 | φ22 | 15.5 | 17.5 | 13 | M3  | M4        |
| USQ13-234 |     |     |      |      |    | M4  |           |
| USQ16-234 | □16 | φ25 | 19   | 21   | 15 | M4  | M5        |
| USQ16-235 |     |     |      |      |    | M5  |           |
| USQ19-235 | □19 | φ29 | 21.5 | 25   | 15 | M5  | M5        |
| USQ19-236 |     |     |      |      |    | M6  |           |
| USQ20-235 | □20 | φ29 | 21.5 | 25   | 15 | M5  | M5        |
| USQ20-236 |     |     |      |      |    | M6  |           |