

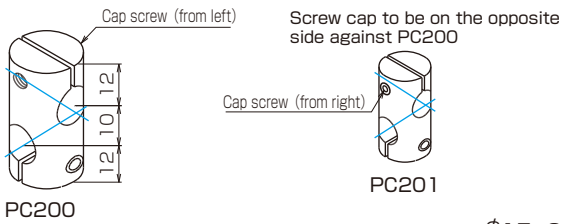
PC($\phi 9$) series

(stainless-steel bolt M4)

When you use the parts for a clockwise and anticlockwise rotation as a pair, it is easy to clamp a screw.

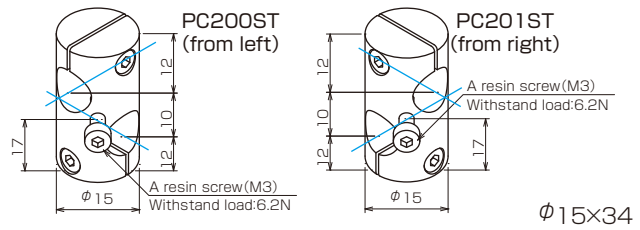
PC200,PC201

Cross 90° hole for right-angle shaft attachment



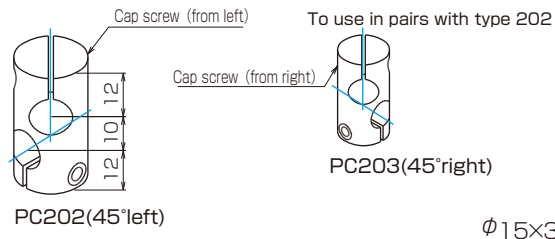
PC200ST,PC201ST

A screw stopper for fine adjustments
Cross 90° hole It can be used for the non-slip or the fine adjustment of a positioning.



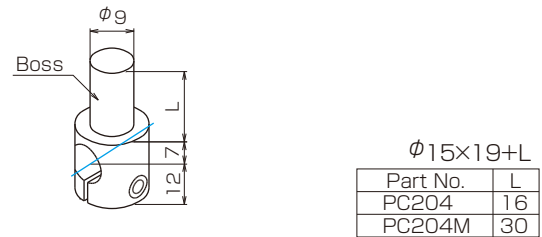
PC202,PC203

Cross 45° hole for use in pairs, for attachment to diagonally



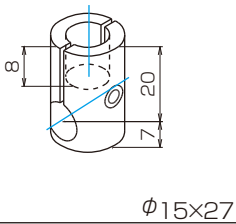
PC204,PC204M

One-sided boss A combination of other parts is available at a free angle.



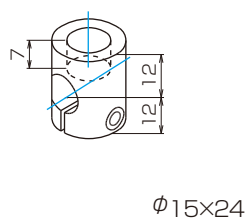
PC209

Vertical-horizontal hole for frame support or T-shape attachment.



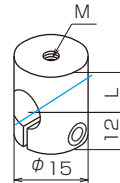
PC213

Vertical-horizontal hole for frame support or T-shape attachment.



PC220~PC224

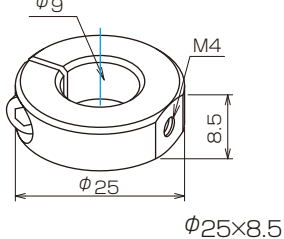
Screw tapped for parts or board attachment



Part No.	L	M
PC220	12	M3
PC221	12	M4
PC222	16	M5
PC223	16	M6
PC224	16	M8

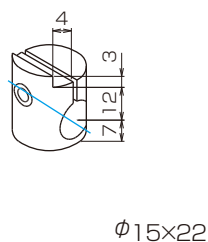
PC237

Support Rings for PUON positioning / Slip prevention when screw loosening positioning alignment, supported by PC237



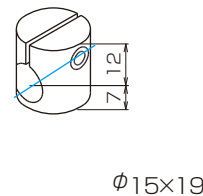
PC240

Shelf plate support for slip prevention



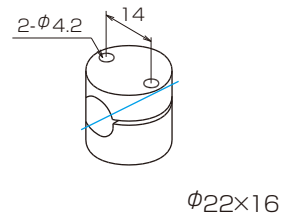
PC242

Shelf plate support for shelf plate support or shaft stopper



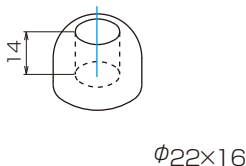
PC243

Wall fixing for fixing by 2-φ4.2 with shaft



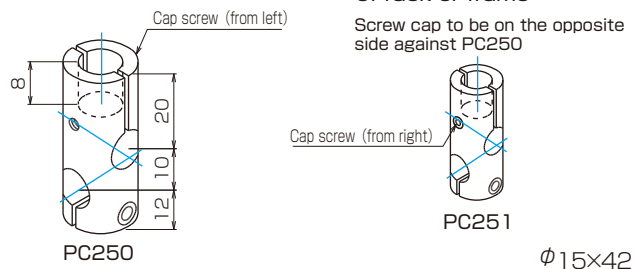
PC246

Shaft-end for strut base



PC250,PC251

3 direction hole for multistage assembly of rack or frame
Screw cap to be on the opposite side against PC250



●For 300, 400 type, please match the mark on both edge phase on assembly.