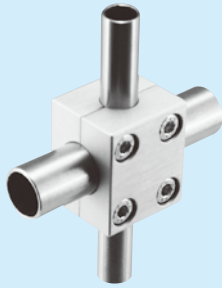


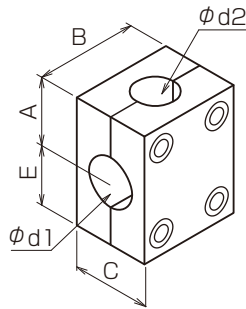
When you use the parts for a clockwise and anticlockwise rotation as a pair, it is easy to clamp a screw.

402

to tuck without disassembling frame (capable of later attachment)



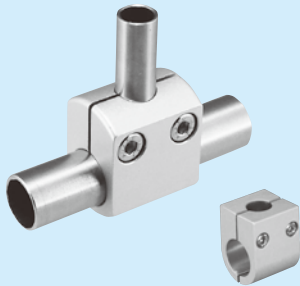
Split T



	$\phi d1$	$\phi d2$	C	E	A	B	Cap screw
CS402	$\phi 9$	$\phi 6$	16	12	12	20	4-M4
JC402	$\phi 13$	$\phi 9$	22	14.5	14.5	24	

722

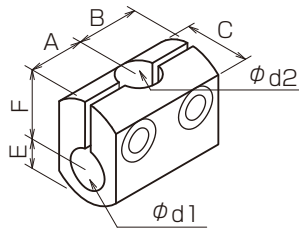
for frame support or T-shape attachment.



LJ722

The type LJ722 is different shape.

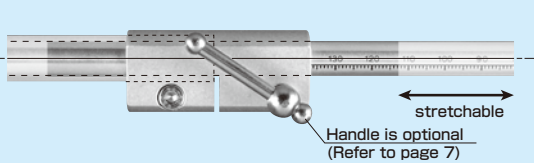
Vertical-horizontal hole



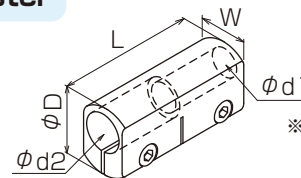
	$\phi d1$	$\phi d2$	E	F	A	B	C	Cap screw
CS722	$\phi 9$	$\phi 6$	6.5	12.5	11	11	13	2-M4
JC722	$\phi 13$	$\phi 9$	9	19	12	12	18	
LJ722	$\phi 19.1$	$\phi 13$	14	24	14	14	38	

RAJ

A positioning of attaching part or the adjusting of width of a guide can be done with the one-touch operation by taking small diameter pipe in and out.



Pipe adjuster



※Please select any pipe of same O.D with the bore $\phi d1, \phi d2$. We can be of assistance in terms of wall thickness.

※For small diameter pipe, please insert L-length into big diameter pipe and tighten.

	$\phi d1$ ^{H8}	$\phi d2$ ^{H8}	ϕD	L	W	Cap screw	Horizontal load N
RAJ-0608	6	8	17	30	11	2-M3	86
RAJ-0810	8	10	19	40	13		113
RAJ-1013	10	13	23	50	16	2-M4	235
RAJ-1216	12	16	28	60	19	2-M5	544
RAJ-1619	16	19.05	33	70	24		735
RAJ-2025	20	25.05	42	80	32		936

