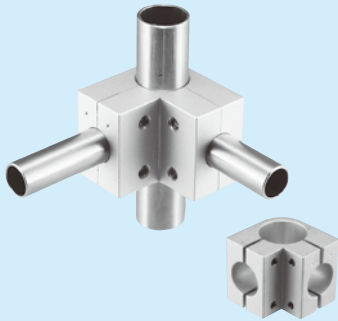


Different bore type

When you use the parts for a clockwise and anticlockwise rotation as a pair, it is easy to clamp a screw.

300

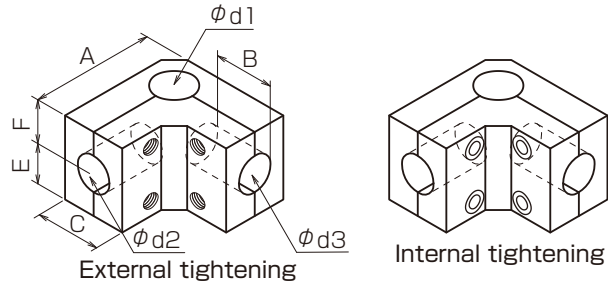
to set the corner of frame assembly



HL300

The type HL300 is different shape.

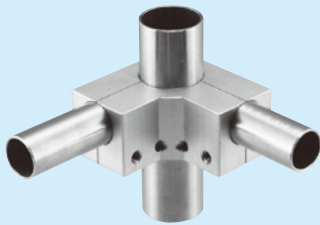
For corner



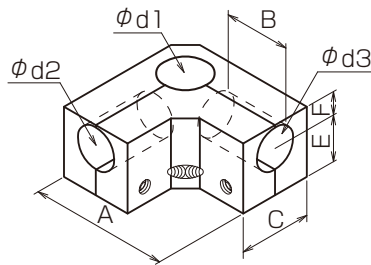
External tightening	Internal tightening	$\phi d1$	$\phi d2$	$\phi d3$	E	F	A	C	B	Cap screw
JC300	JC301	$\phi 13$	$\phi 9$	$\phi 9$	12	12	29	16	12	4-M4
HL300	HL301	$\phi 25.1$	$\phi 19.1$	$\phi 19.1$	19	19	42	28	14	4-M5

353

to set the corner of frame assembly / to be nearly flat for pipe and clamp top



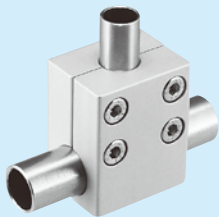
Low-profile corner



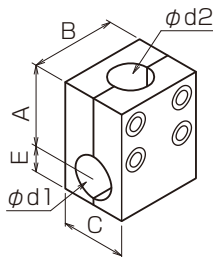
	$\phi d1$	$\phi d2$	$\phi d3$	E	F	A	C	B	Cap screw
LJ353	$\phi 19.1$	$\phi 13$	$\phi 13$	14	7	42	22	15	4-M4

400

to tuck without disassembling frame (capable of later attachment)



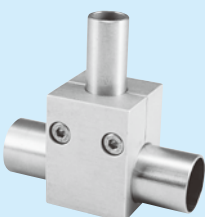
Split T



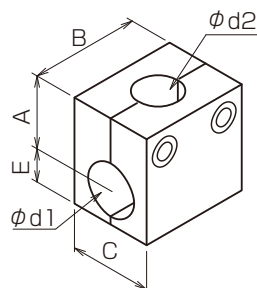
	$\phi d1$	$\phi d2$	C	E	A	B	Cap screw
CE400	$\phi 8$	$\phi 9$	16	5	26	25	4-M4
GF400	$\phi 12$	$\phi 10$	22	9	27	29	
JF400	$\phi 13$	$\phi 10$	22	9	27	29	
JG400	$\phi 12$	$\phi 13$	22	9	27	29	
NK400	$\phi 15$	$\phi 16$	24	10	32	34	4-M5
QL400	$\phi 20$	$\phi 19.1$	28	13	37	38	

401

to tuck without disassembling frame (capable of later attachment)



Split T



	$\phi d1$	$\phi d2$	C	E	A	B	Cap screw
CS401	$\phi 9$	$\phi 6$	16	6	18	20	2-M4
JC401	$\phi 13$	$\phi 9$	22	9.5	19.5	24	
LJ401	$\phi 19.1$	$\phi 13$	28	12	26	28	