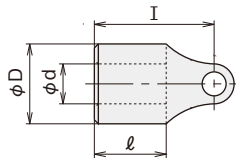
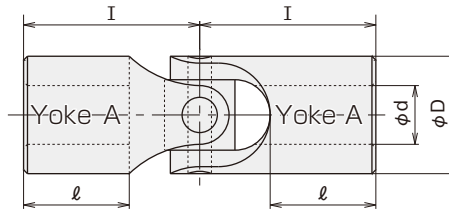


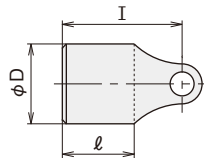
Miniature Type MM

High Precision,
Super Small Shaft Diameter Use
SK4 (special heat treatment)
Stainless Steel SUS304, SUS316

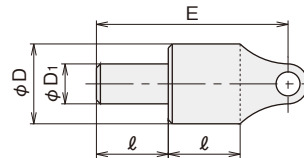
| | | | |
|------------------|-----------------|----------------------|--------------------|
| Max. joint angle | Rust prevention | Additional machining | Product with shaft |
| up to 30° | treated | possible | make-to-order |



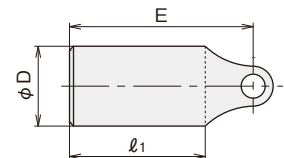
Yoke A



Yoke B



Yoke C



Yoke D

Flexible combination is possible depending upon the application.
Example of Combination

Yoke A and Yoke A = (A)(A)
Yoke B and Yoke C = (B)(C)

○ Fill in .

Type M Dimension Table

Max. transmission torque capacity changes depending upon revolution.

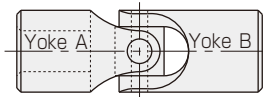
| Symbol Size | ϕd^{H7} | ϕD | I | l | $\phi D1$ | E | l ₁ | Max. transmission torque capacity N·m | |
|----------------|---------------|----------|-----|-----|-----------|------|----------------|---------------------------------------|------------------------------|
| | | | | | | | | Type M○○ (SK-4) | Type M○○S·M○○SS (SUS304·316) |
| 1.0 | 1 | 2 | 4.5 | 3 | 1 | 7.5 | 6 | 0.03 | 0.02 |
| 1.5 | 1.5 | 3 | 6 | 4 | 1.5 | 10 | 8 | 0.05 | 0.03 |
| 2.0 | 2 | 4 | 7 | 4.5 | 2 | 11.5 | 9 | 0.13 | 0.08 |
| 2.5 | 2.5 | 5 | 7.5 | 4.5 | 2.5 | 12 | 9 | 0.20 | 0.12 |

Request and Advice for Order of Type MM

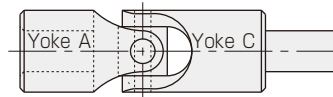
Flexible combination is possible based on the application.

All of these are make-to-order products except for type AA.
Certain lead time for delivery is to be needed except for type AA.
Select appropriate type of combination from the following drawings.
Example of designation MAB-2.0/MCCS-1.0/MADSS-2.5

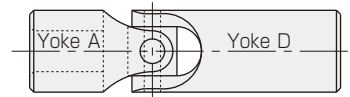
● AB



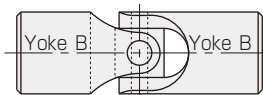
● AC



● AD



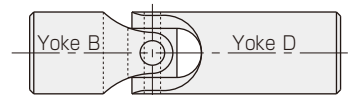
● BB



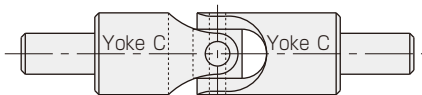
● BC



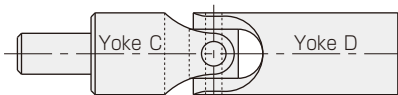
● BD



● CC



● CD



● DD

