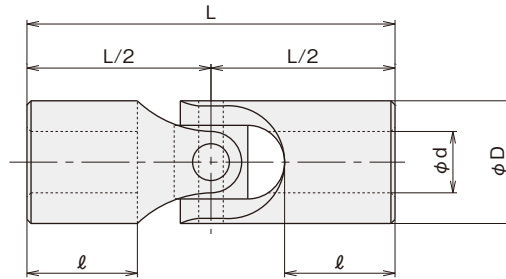
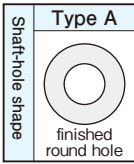


Miniature Type M

High Precision, Small Shaft Diameter Use Material S45C

Max. joint angle	Additional machining	Product with shaft
up to 30°	possible	refer to page 35



- S45C combined nitriding treatment is processed, in order to increase the anti-wear characteristics.
- ※ mark induction hardening

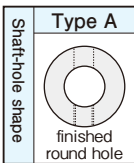
■ Type M Dimension Table

Symbol Size	ϕd^{H7}	ϕD	L	l	Swing of the center	Mass g	Max. revolution min^{-1}	Max. transmission torque capacity $\text{N}\cdot\text{m}$
M-2.0	2	6	15	4	0.10	2.5	1000	0.4
M-2.5	2.5	6	15	4	0.10	2.5	1000	0.4
M-3.0	3	6	18	5.5	0.10	2.5	1000	0.4
M-3.5	3.5	6	18	5.5	0.10	2.5	1000	0.4
M-4.0	4	8	24	7.2	0.15	6.5	900	1.1
M-4.5	4.5	8	24	7.2	0.15	5.5	900	1.1
※ M-5.0	5	10	30	9	0.15	12.5	700	2.4
※ M-5.5	5.5	10	30	9	0.15	11.5	700	2.4

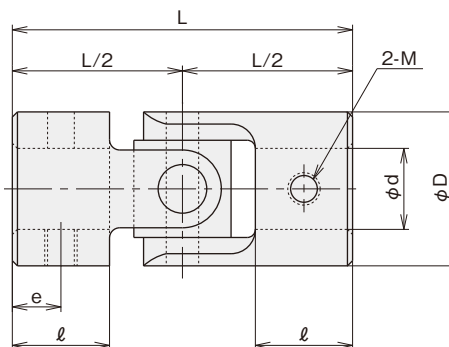
Hobby Type R

Light Torque, Manual Use Material SUM24L

Max. joint angle
up to 30°



- Surface plating is treated.
- With set screw



■ Type R Dimension Table

Symbol Size	ϕd^{H8}	ϕD	L	l	e	2-M	Mass g
R- 3	3	8	24	7	3.5	M3	6.5
R- 4	4	8	24	7	3.5	M3	6.0
R- 5	5	12	31	9	4.5	M4	18.5
R- 6	6	12	31	9	4.5	M4	17.5
R- 8	8	19	42	12	6	M4	66.5
R-10	10	19	42	12	6	M4	61.5