

Bearing Type K

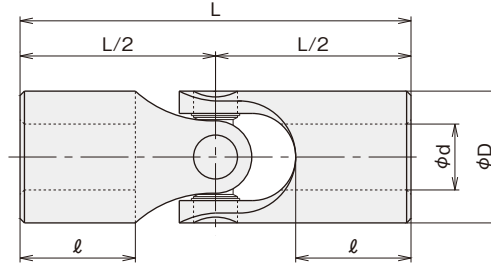
● Please read "request and advice for order" in page 6 before placing an order.

Max. joint angle	Additional machining	Product with shaft	Boot
up to 30°	possible	refer to page 30 and 33	refer to page 24

Shaft-hole shape	Type A	Type B	Type T	Type F
	finished round hole	hole with key way	hole with key way and tap	solid

High Revolution Use Material S45C

- This type is good for high revolution use, because needle bearings with grease sealed are used.
- A hole for a spring-pin attached should be machined together with a shaft at a location of $l/2$.
- Types of K-20 and larger come with grease nipple.
- Select type B or H, when you use a boot.
- Designate new JIS or old JIS for key, when the type of shaft-hole shape is B or T.
- A spring-pin is not attached for a joint with a key way.



■ Type K Dimension Table

Attachment ● spring-pin 2 pieces

Symbol Size	ϕd^{H7}	ϕD	L	l	New JIS key		Old JIS key		TAP M	Dimension of spring-pin for fixing	Swing of the center	Mass kg	Max. revolution min ⁻¹	Max. transmission torque capacity N·m
					a ^{JS9}	b	a ^{JS9}	b						
K-10	10	20	62	19	3	1.4	4	1.5	M4	3×20	0.07	0.10	2500	8
K-12	12	25	74	23.5	4	1.8	4	1.5	M4	4×25	0.07	0.19	2000	16
K-16	16	32	104	34.5	5	2.3	5	2.0	M5	5×32	0.07	0.42	1700	30
K-20	20	42	124	37.5	6	2.8	5	2.0	M6	6×40	0.10	0.87	1300	54
K-25	25	50	140	39.5	8	3.3	7	3.0	M8	8×50	0.10	1.35	1100	78
K-30	30	60	178	52.5	8	3.3	7	3.0	M8	10×60	0.12	2.41	950	137

Bearing Type KD

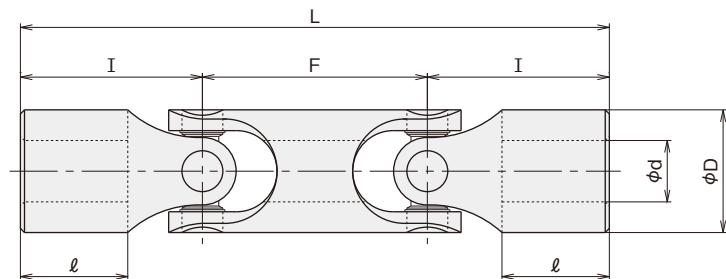
● Please read "request and advice for order" in page 6 before placing an order.

Max. joint angle	Additional machining	Boot
up to 60°	possible	refer to page 25

Shaft-hole shape	Type A	Type B	Type T	Type F
	finished round hole	hole with key way	hole with key way and tap	solid

High Revolution Use Material S45C

- This type is good for high revolution use, because needle bearings with grease sealed are used.
- A hole for a spring-pin attached should be machined together with a shaft at a location of $l/2$.
- Types of KD-20 and larger come with grease nipple.
- Select type BD, when you use a boot.
- Designate new JIS or old JIS for key, when the type of shaft-hole shape is B or T.
- A spring-pin is not attached for a joint with a key way.



■ Type KD Dimension Table

Attachment ● spring-pin 2 pieces

Symbol Size	ϕd^{H7}	ϕD	L	l	I	F	New JIS key		Old JIS key		TAP M	Dimension of spring-pin for fixing	Swing of the center	Mass kg	Max. revolution min ⁻¹	Max. transmission torque capacity N·m
							a ^{JS9}	b	a ^{JS9}	b						
KD-10	10	20	96	19	31	34	3	1.4	4	1.5	M4	3×20	0.07	0.14	2200	6
KD-12	12	25	115	23.5	37	41	4	1.8	4	1.5	M4	4×25	0.07	0.28	1700	12
KD-16	16	32	158	34.5	52	54	5	2.3	5	2.0	M5	5×32	0.07	0.61	1300	24
KD-20	20	42	188	37.5	62	64	6	2.8	5	2.0	M6	6×40	0.10	1.26	1000	44
KD-25	25	50	220	39.5	70	80	8	3.3	7	3.0	M8	8×50	0.10	2.02	880	61
KD-30	30	60	275	52.5	89	97	8	3.3	7	3.0	M8	10×60	0.12	3.49	730	108