

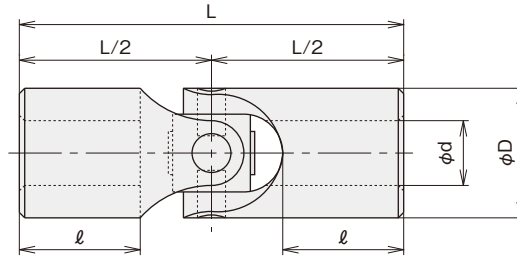
# Strong Type B

## High Torque, Conventional Use Material S45C

● Please read "request and advice for order" in page 6 before placing an order.

Max. joint angle	Additional machining	Product with shaft	Boot
up to 30°	possible	refer to page 29, 32 and 34	refer to page 24

Shaft-hole shape	Type A	Type B	Type T	Type F	Type Q
	finished round hole	hole with key way	hole with key way and tap	solid	can be disassembled



■ Type B Dimension Table

Attachment ● spring-pin 2 pieces

Symbol Size	φd <sup>H7</sup>	φD	L	ℓ	New JIS key		Old JIS key		TAP M	Dimension of spring-pin for fixing	Swing of the center	Mass kg	Max. revolution min <sup>-1</sup>	Max. transmission torque capacity N·m
					a <sup>JIS9</sup>	b	a <sup>JIS9</sup>	b						
B- 6	6	12	50	18	2	1.0	2	1.0	M 3	2 × 12	0.10	0.03	1700	8
B- 8	8	16	56	19	3	1.4	3	1.5	M 3	2.5 × 16	0.10	0.06	1500	18
B-10	10	20	68	23	3	1.4	4	1.5	M 4	3 × 20	0.14	0.11	1300	31
B-12	12	24	84	29	4	1.8	4	1.5	M 4	4 × 25	0.14	0.20	1100	55
B-14	14	28	94	31.5	5	2.3	5	2.0	M 5	5 × 28	0.14	0.31	950	88
B-16	16	32	104	34.5	5	2.3	5	2.0	M 5	5 × 32	0.14	0.45	830	127
B-18	18	36	120	40	6	2.8	5	2.0	M 6	6 × 35	0.20	0.65	750	186
B-20	20	40	124	40	6	2.8	5	2.0	M 6	6 × 40	0.20	0.82	670	245
B-22	22	44	130	41	6	2.8	7	3.0	M 8	6 × 45	0.20	1.06	600	333
B-25	25	50	140	43	8	3.3	7	3.0	M 8	8 × 50	0.20	1.44	530	490
B-30	30	60	178	56	8	3.3	7	3.0	M 8	10 × 60	0.25	2.74	440	736
B-35	35	70	200	62	10	3.3	10	3.5	M10	10 × 70	0.25	4.26	380	1177
B-40	40	80	228	70	12	3.3	10	3.5	M10	10 × 80	0.25	6.20	330	1765
B-45	45	90	250	76	14	3.8	12	3.5	M10	12 × 90	0.25	8.61	300	2550
B-50	50	100	270	80	14	3.8	12	3.5	M12	12 × 100	0.25	11.45	260	3334
B-60	60	120	300	84	18	4.4	15	5.0	M12	13 × 120	0.25	18.24	220	5688

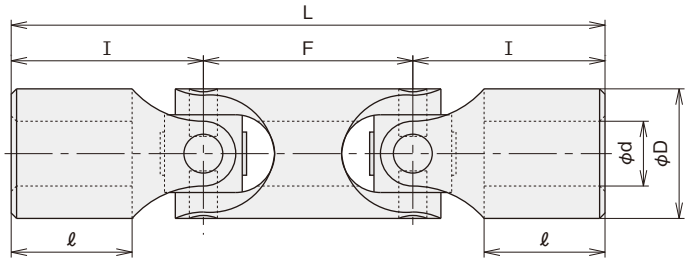
# Strong Type BD

## High Torque, Conventional Use Material S45C

● Please read "request and advice for order" in page 6 before placing an order.

Max. joint angle	Additional machining	Boot
up to 60°	possible	refer to page 25

Shaft-hole shape	Type A	Type B	Type T	Type F	Type Q
	finished round hole	hole with key way	hole with key way and tap	solid	can be disassembled



■ Type BD Dimension Table

Attachment ● spring-pin 2 pieces

Symbol Size	φd <sup>H7</sup>	φD	L	ℓ	I	F	New JIS key		Old JIS key		TAP M	Dimension of spring-pin for fixing	Swing of the center	Mass kg	Max. revolution min <sup>-1</sup>	Max. transmission torque capacity N·m
							a <sup>JIS9</sup>	b	a <sup>JIS9</sup>	b						
BD- 6	6	12	75	18	25	25	2	1.0	2	1.0	M 3	2 × 12	0.10	0.05	1300	6
BD- 8	8	16	86	19	28	30	3	1.4	3	1.5	M 3	2.5 × 16	0.10	0.09	1100	14
BD-10	10	20	102	23	34	34	3	1.4	4	1.5	M 4	3 × 20	0.14	0.17	950	26
BD-12	12	24	125	29	42	41	4	1.8	4	1.5	M 4	4 × 25	0.14	0.30	780	44
BD-14	14	28	143	31.5	47	49	5	2.3	5	2.0	M 5	5 × 28	0.14	0.45	680	70
BD-16	16	32	158	34.5	52	54	5	2.3	5	2.0	M 5	5 × 32	0.14	0.66	600	98
BD-18	18	36	180	40	60	60	6	2.8	5	2.0	M 6	6 × 35	0.20	0.93	530	147
BD-20	20	40	188	40	62	64	6	2.8	5	2.0	M 6	6 × 40	0.20	1.23	480	196
BD-22	22	44	200	41	65	70	6	2.8	7	3.0	M 8	6 × 45	0.20	1.57	430	265
BD-25	25	50	220	43	70	80	8	3.3	7	3.0	M 8	8 × 50	0.20	2.22	390	392
BD-30	30	60	275	56	89	97	8	3.3	7	3.0	M 8	10 × 60	0.25	4.15	310	588
BD-35	35	70	310	62	100	110	10	3.3	10	3.5	M10	10 × 70	0.25	6.45	270	941
BD-40	40	80	350	70	114	122	12	3.3	10	3.5	M10	10 × 80	0.25	9.41	230	1422
BD-45	45	90	390	76	125	140	14	3.8	12	3.5	M10	12 × 90	0.25	13.32	210	2010
BD-50	50	100	426	80	135	156	14	3.8	12	3.5	M12	12 × 100	0.25	17.90	190	2648
BD-60	60	120	485	84	150	185	18	4.4	15	5.0	M12	13 × 120	0.25	29.28	160	4511