

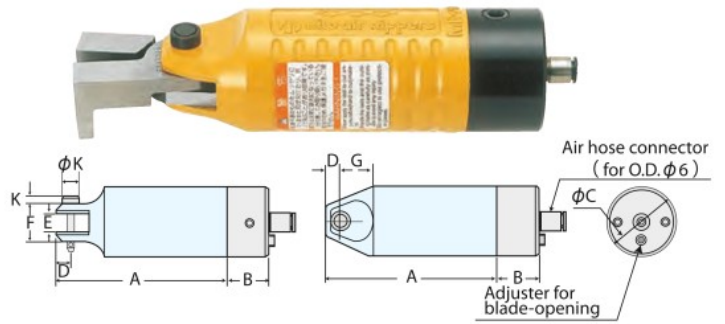
# AIR CUTTERS (MACHINE-FITTING TYPE)

No tool is needed for blade replacement.

## MACHINE-FITTING TYPE

### MR-MG Type

Standard



#### MR-MG type specification

Model (less blade)	Weight (g)	Air consumption (cm <sup>3</sup> /stroke)	Power N (approx.)	Air pressure (MPa)	Dimensions (mm)									
					A	B	C	D	E	F	G	H	J	K
MR20MG	338	268	3,490	0.5~0.6	109	27	45	9	12	23	22	-	11	5
MR30AMG	597	631	5,531	0.5~0.6	145	27	56	10	17	30	30	-	12	5

#### MR-MG type Blade cutting capacity

Model	Blade (*): Carbide tipped	Copper wire	Steel wire	Stainless wire	Piano wire	Crimping	Plastic (φmm)	
							Soft	Hard
MR20MG	S5, S5S, P6, CR6, EP6	2.6	2.0	1.6	-	-	-	-
	Z6*, Z6S, ZCR6, ZEP6	2.6	2.0	1.6	1.0	-	-	-
	F5, F5S, FD5, F5LS, FEP6	-	-	-	-	-	7.0	5.0
	Y6, K6	-	-	-	-	-	-	-

Shapes & Dimensions of Standard Blades Please see page 5

Special Blades (Custom-made blades) Please see page 8

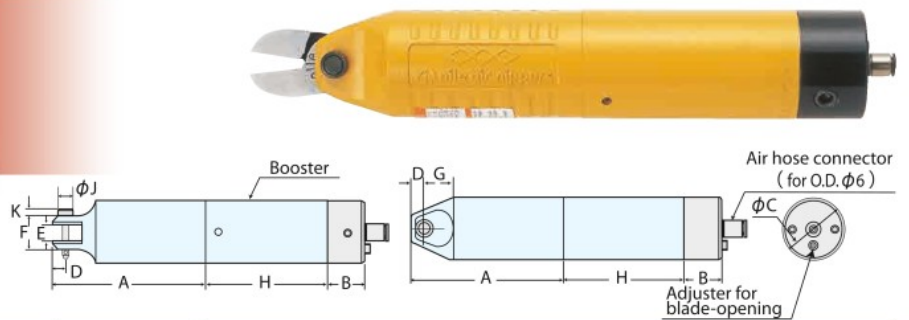
#### MR-MG type Blade cutting capacity

Model	Blade (*): Carbide tipped	Copper wire	Steel wire	Stainless wire	Piano wire	Crimping	Plastic (φmm)	
							Soft	Hard
MR30AMG	S7P, S7PS, P8P, CR8P, EP10P, P8PS	3.3	2.8	2.0	-	-	-	-
	Z8P*, Z8PS, ZCR8P, ZEP10P	3.3	2.8	2.0	1.2	-	-	-
	F9P, F9PS, FD9P, FEP10P	-	-	-	-	-	10.0	6.5
	Y8P, K8P, Y817P	-	-	-	-	-	-	-
	SH8P	-	-	-	-	-	-	-
	A8P-1.25, A8P-2.0	-	-	-	-	-	1.25/2.0	-
AR8P-1.25, AR8P-2.0	-	-	-	-	-	1.25/2.0	-	

## MACHINE-FITTING TYPE

### MP-MG Type

Heavy-duty



#### MP-MG type specification

Model (less blade)	Weight (g)	Air consumption (cm <sup>3</sup> /stroke)	Power N (approx.)	Air pressure (MPa)	Dimensions (mm)									
					A	B	C	D	E	F	G	H	J	K
MP25AMG	560	459	5,373	0.4~0.5	109	27	45	9	12	23	22	87	11	5
MP35AMG	924	1,146	10,118	0.5~0.6	145	27	56	10	17	30	30	92	12	5

#### MP-MG type Blade cutting capacity

Model	Blade (*): Carbide tipped	Copper wire	Steel wire	Stainless wire	Piano wire	Crimping	Plastic (φmm)	
							Soft	Hard
MP25AMG	S5, S5S, P6, CR6, EP6	2.6	2.0	1.6	-	-	-	-
	Z6*, Z6S, ZCR6, ZEP6	2.6	2.0	1.6	1.0	-	-	-
	F5, F5S, FD5, F5LS, FEP6	-	-	-	-	-	7.0	5.0
	Y6, K6	-	-	-	-	-	-	-

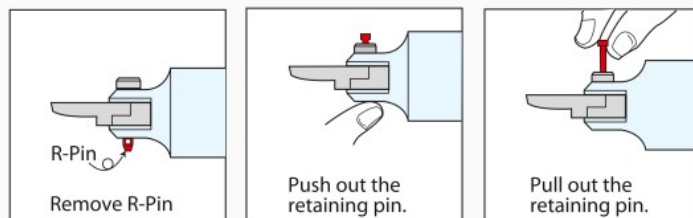
Shapes & Dimensions of Standard Blades Please see page 5

Special Blades (Custom-made blades) Please see page 8

#### MP-MG type Blade cutting capacity

Model	Blade (*): Carbide tipped	Copper wire	Steel wire	Stainless wire	Piano wire	Crimping	Plastic (φmm)	
							Soft	Hard
MP35AMG	S7P, S7PS, P8P, CR8P, EP10P, P8PS	4.8	4.0	2.8	-	-	-	-
	Z8P*, Z8PS, ZCR8P, ZEP10P	4.8	4.0	2.8	1.2	-	-	-
	F9P, F9PS, FD9P, FEP10P	-	-	-	-	-	13.0	6.5
	Y8P, K8P, Y817P	-	-	-	-	-	-	-
	SH8P	-	-	-	-	-	-	-
	A8P-1.25, A8P-2.0	-	-	-	-	-	1.25/2.0	-
AR8P-1.25, AR8P-2.0	-	-	-	-	-	1.25/2.0	-	

Blade can be replaced easily and quickly.  
Blade opening-angle can be adjusted.



Be sure to secure Retaining Pin with R-Pin attached when Retaining Pin is likely to suffer some drawing-out power or shock. (R-Pin is designed for easy removal.)