

DK Models

COUPLINGS

ETP BUSHINGS

ELECTROMAGNETIC
CLUTCHES & BRAKES

SPEED CHANGERS
& REDUCERS

INVERTERS

LINEAR SHAFT DRIVES

TORQUE LIMITERS

ROSTA

SERIES

SUSPENSION UNITS

TENSIONERS

ANTI-VIBRATION
MOUNTINGS

OSCILLATING
MOUNTINGS



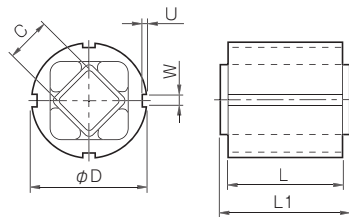
Specifications

Size	Torque at torsional angle [N-m]						Mass [kg]
	5°	10°	15°	20°	25°	30°	
11 × 20	0.3	0.8	1.3	2.0	2.9	4.0	0.03
11 × 30	0.4	1.2	2.0	3.1	4.3	6.0	0.05
11 × 50	0.7	2.0	3.4	5.1	7.2	10.0	0.07
15 × 25	0.7	1.6	2.6	4.0	5.7	8.2	0.06
15 × 40	1.1	2.5	4.2	6.4	9.2	13.2	0.10
15 × 60	1.6	3.8	6.3	9.6	13.8	19.8	0.14
18 × 30	1.9	4.5	7.5	11.0	15.0	20.6	0.13
18 × 50	3.2	7.5	12.5	18.3	25.0	34.4	0.20
18 × 80	5.1	12.0	20.0	29.3	40.0	55.0	0.33
27 × 40	4.7	10.7	17.5	26.9	39.5	57.0	0.27
27 × 60	7.0	16.0	26.3	40.3	59.3	85.5	0.40
27 × 100	11.7	26.7	43.8	67.2	98.8	142.5	0.66
38 × 60	13.0	30.4	50.6	78.0	113.0	162.0	0.72
38 × 80	17.3	40.5	67.5	104.0	151.0	216.0	0.94
38 × 120	26.0	60.8	101.2	156.0	226.0	324.0	1.37
45 × 80	27.6	62.4	104.0	160.0	222.0	320.0	1.35
45 × 100	34.5	78.0	130.0	200.0	278.0	400.0	1.65
45 × 150	51.8	117.0	195.0	300.0	420.0	600.0	2.44

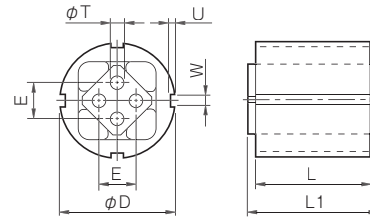
* The sizes 45 × 80, 45 × 100, and 45 × 150 are made to order.

Dimensions

DK-S



DK-A



Unit [mm]

Size		C	D	E	L	L1	T ^{+0.5}	U	W
DK-S	DK-A								
11 × 20	—	—	—	—	20	25	—	—	—
11 × 30	—	8 ^{+0.25} ₀	28 ^{+0.5} _{+0.1}	—	30	35	—	2.5	4
11 × 50	—	—	—	—	50	55	—	—	—
15 × 25	15 × 25	—	—	—	25	30	—	—	—
15 × 40	15 × 40	11 ^{+0.25} ₀	36 ^{+0.5} _{+0.1}	10	40	45	5	2.5	5
15 × 60	15 × 60				60	65			
18 × 30	18 × 30				30	35			
18 × 50	18 × 50	12 ^{+0.25} ₀	45 ^{+0.6} _{+0.1}	12	50	55	6	2.5	5
18 × 80	18 × 80				80	85			
27 × 40	27 × 40	22 ^{+0.25} ₀	62 ^{+0.7} _{+0.1}	20	40	45	8	3	6
27 × 60	27 × 60				60	65			
27 × 100	27 × 100				100	105			
38 × 60	38 × 60	30 ^{+0.25} ₀	80 ^{+0.8} _{+0.1}	25	60	70	10	3.5	7
38 × 80	38 × 80				80	90			
38 × 120	38 × 120				120	130			
45 × 80	45 × 80	35 ^{+0.25} ₀	95 ^{+1.0} _{+0.1}	35	80	90	12	4	8
45 × 100	45 × 100				100	110			
45 × 150	45 × 150				150	160			

* The BK model is applicable as the mounting clamp. (Refer to the options on P569)

MODELS

DR

DK

DO

How to Place an Order

DK - S - 11 × 20
 Type (Core material)
 S: Steel A: Aluminum alloy

* Depending on your location and such, we may not be able to sell our products. Please contact us for details.