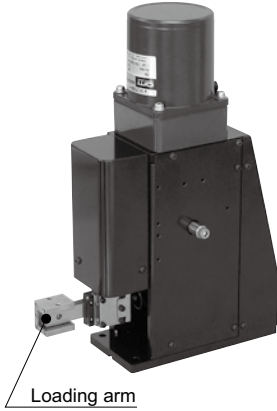


Model selection Center carry

What is "center carry"?

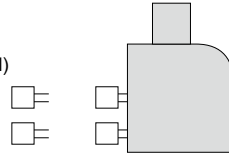


This is a type whose loading arm is located inside the body. The loading arm moves vertically and horizontally.

Inter-unit pitch can be reduced, resulting in compact machine configuration.

Stroke

80 to 200 mm (X: horizontal)
20 to 50 mm (Z: vertical)



PAU
Cam-driven

