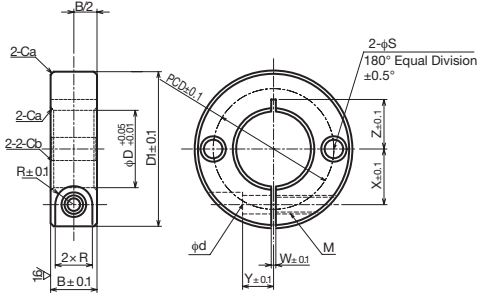


Shaft Collar <KSC-SL2>

● Order No. Example KSC1215SL2

Shaft Collar No.



◇ List of Shaft Collar Sizes

Shaft Collar No.	Inner Diameter φD	Total Width B±0.1	Outer Diameter D1	Bolt Hole M	Bolt M x Length	φd	R	W	X
KSC 0608SL2	6	8	20	M 3	M 3x10	3.4	3	1	6
KSC 0610SL2	6	10	20	M 4	M 4x10	4.5	3.75	1	6
KSC 0808SL2	8	8	25	M 3	M 3x10	3.4	3	1.5	8
KSC 0810SL2	8	10	25	M 4	M 4x12	4.5	3.75	1.5	8
KSC 0812SL2	8	12	28	M 5	M 5x16	5.5	4.5	1.5	8.5
KSC 0815SL2	8	15	30	M 6	M 6x15	7	6	1.5	9.5
KSC 1010SL2	10	10	30	M 4	M 4x12	4.5	3.75	1.5	9
KSC 1012SL2	10	12	30	M 5	M 5x16	5.5	4.5	1.5	9
KSC 1015SL2	10	15	35	M 6	M 6x18	7	6	1.5	11
KSC 1210SL2	12	10	30	M 4	M 4x12	4.5	3.75	1.5	10
KSC 1212SL2	12	12	30	M 5	M 5x16	5.5	4.5	1.5	10
KSC 1215SL2	12	15	35	M 6	M 6x18	7	6	1.5	11
KSC 1310SL2	13	10	30	M 4	M 4x12	4.5	3.75	1.5	10
KSC 1315SL2	13	15	35	M 6	M 6x18	7	6	1.5	11
KSC 1510SL2	15	10	32	M 4	M 4x12	4.5	3.75	1.5	11
KSC 1512SL2	15	12	35	M 5	M 5x16	5.5	4.5	1.5	12
KSC 1515SL2	15	15	40	M 6	M 6x20	7	6	1.5	13
KSC 1610SL2	16	10	35	M 4	M 4x12	4.5	3.75	1.5	12
KSC 1612SL2	16	12	35	M 5	M 5x16	5.5	4.5	1.5	12
KSC 1615SL2	16	15	40	M 6	M 6x20	7	6	1.5	13
KSC 2010SL2	20	10	40	M 4	M 4x16	4.5	3.75	1.5	14
KSC 2012SL2	20	12	40	M 5	M 5x16	5.5	4.5	1.5	14
KSC 2015SL2	20	15	45	M 6	M 6x20	7	6	1.5	15
KSC 2512SL2	25	12	45	M 5	M 5x16	5.5	4.5	1.5	17
KSC 2515SL2	25	15	50	M 6	M 6x25	7	6	1.5	18
KSC 3015SL2	30	15	55	M 6	M 6x25	7	6	1.5	20
KSC 3515SL2	35	15	60	M 6	M 6x25	7	6	2	23
KSC 4018SL2	40	18	70	M 8	M 8x30	9	7	2	26
KSC 5022SL2	50	22	85	M10	M10x35	11	9	3	32