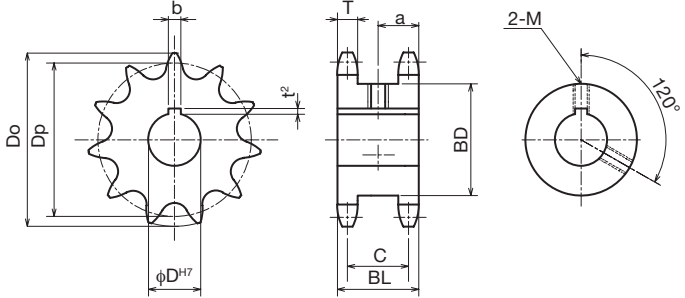
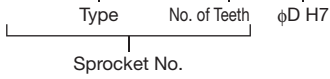


### ● Order No. Example

**FBN 80SD 18 D40**



- Chain ..... No.80
- Chain Pitch ..... (P)25.4 mm
- Roller Link Inner Width ..... (W)15.88mm
- Roller Outside Diameter ..... (Dr)15.88mm
- Tooth Width ..... (T)14.6 mm (C)45.4mm

- m Carbon Structural Steel
- h High-frequency Hardened Teeth

Type	No. of Teeth	φD <sup>H7</sup>	¥		φD <sup>H7</sup>		φD <sup>H7</sup>		Outer Diameter D <sub>o</sub>	Pitch Diameter D <sub>p</sub>	Boss Diameter BD	Boss Length BL	a	Weight kg	No. of Teeth
FBN 80SD	12	35 40 45							110	98.14	69	60	30	2.52	12
	13	40 45 50							118	106.14	77	60	30	3.04	13
	14	40 45 50							127	114.15	85	60	30	3.60	14
	15	40 45 50							135	122.17	93	60	30	4.16	15
	16	40 45			50		60		143	130.20	102	60	30	4.89	16
	17	40			45 50		60		151	138.23	110	60	30	5.61	17
	18	40			45		50 60		159	146.27	118	60	30	6.36	18
	19	40			45		50 60		167	154.32	126	60	30	7.13	19
	20	40			45 50		60		176	162.37	134	60	30	8.03	20
	21	40			45 50		60		184	170.42	142	60	30	8.88	21

### Shaft Hole Machined Specification

φD <sup>H7</sup>	Keyway bxt <sup>2</sup>	Set Screw M
32 - 38	10 x 3.3	8
40 - 42	12 x 3.3	8
45 - 50	14 x 3.8	10
55	16 x 4.3	12
60	18 x 4.4	12



Sprocket No.  and Quantity



Postage

Same-day shipping



Guide

\* Since we also manufacture sizes other than those in the catalog, and machine shaft holes/keys/taps, etc., depending on your request, please contact our company's sales office for details.