

FBN40SD

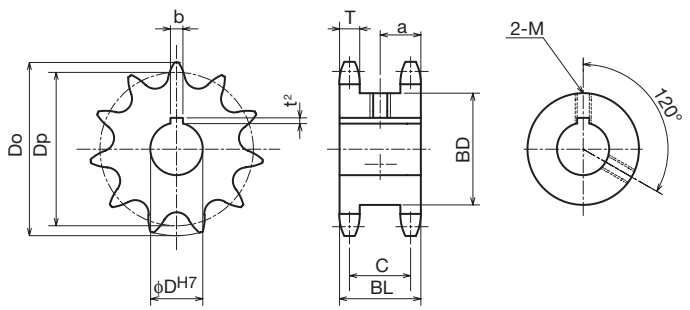
FBNSD Finished Bore Sprocket Single-Double New JIS Keyway Specification

● Order No. Example

FBN 40SD 18 D25



Sprocket No.




- Chain No.40
- Chain Pitch (P)12.70mm
- Roller Link Inner Width (W) 7.95mm
- Roller Outside Diameter (Dr) 7.92mm
- Tooth Width (T) 7.2 mm (C)27.8mm

- m Carbon Structural Steel
- h High-frequency Hardened Teeth

Type	No. of Teeth	φD ^{H7}		Outer Diameter Do	Pitch Diameter Dp	Boss Diameter BD	Boss Length BL	a	Weight kg	No. of Teeth	¥
FBN 40SD	12	15	18	55	49.07	34	35	17.5	0.33	12	
	13	18	20	59	53.07	38	35	17.5	0.40	13	
	14	18	20	63	57.07	42	35	17.5	0.49	14	
	15	20	25	67	61.08	46	35	17.5	0.57	15	
	16	20	25	71	65.10	50	35	17.5	0.66	16	
	17	25	28 30	76	69.12	54	35	17.5	0.76	17	
	18	25	28 30 35	80	73.14	59	35	17.5	0.89	18	
	19	25	28 30 35	84	77.16	63	35	17.5	1.00	19	
	20	25	28 30 35	88	81.18	67	35	17.5	1.14	20	
	21	25	28 30 35	92	85.21	71	35	17.5	1.23	21	


Shaft Hole Machined Specification

φD ^{H7}	Keyway b x t ²	Set Screw M
15 - 17	5 x 2.3	6
18 - 22	6 x 2.8	6
24 - 30	8 x 3.3	8
32 - 35	10 x 3.3	8




and Quantity"/>

Order Method



Same-day shipping

Postage



* Since we also manufacture sizes other than those in the catalog, and machine shaft holes/keys/taps, etc., depending on your request, please contact our company's sales office for details.

Guide