

**TX Assembled terminal block TXM, TXUM and TXWM Series**

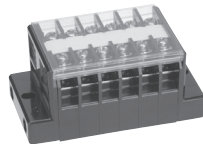
**Raised type (1/3)**

No. of pins	Type name	600V, 1.25mm <sup>2</sup> [15A], M3×8±, raised type				General mass (g)	Type name	600V, 2mm <sup>2</sup> [20A], M3×8±, raised type				General mass (g)	Type name	600V, 2mm <sup>2</sup> [20A], M3.5×8±, raised type				General mass (g)
		A	B	C	D			A	B	C	D			A	B	C	D	
2	TXUM 7 02	39	B=38,		30	TXUM 10SM3 02	40	B=38,		34	TXUM 10S 02	40	B=38,		35			
3	TXUM 7 03	46	C=33.1,		40	TXUM 10SM3 03	48	C=33.1,		43	TXUM 10S 03	48	C=33.1,		45			
4	TXUM 7 04	53.5	D=6		50	TXUM 10SM3 04	56	D=6.7		53	TXUM 10S 04	56	D=6.7		55			
5	TXUM 7 05	60.5			60	TXUM 10SM3 05	64			63	TXUM 10S 05	64			65			
6	TXUM 7 06	68			70	TXUM 10SM3 06	72			73	TXUM 10S 06	72			75			
8	TXUM 7 08	82.5			90	TXUM 10SM3 08	88			93	TXUM 10S 08	88			95			
10	TXUM 7 10	97			110	TXUM 10SM3 10	104			113	TXUM 10S 10	104			115			
12	TXUM 7 12	112			125	TXUM 10SM3 12	120			130	TXUM 10S 12	120			135			
14	TXUM 7 14	126.5			145	TXUM 10SM3 14	136			150	TXUM 10S 14	136			155			
15	TXUM 7 15	133.5			155	TXUM 10SM3 15	144			160	TXUM 10S 15	144			165			
16	TXUM 7 16	141			165	TXUM 10SM3 16	152			170	TXUM 10S 16	152			175			
18	TXUM 7 18	155.5			185	TXUM 10SM3 18	168			190	TXUM 10S 18	168			195			
20	TXUM 7 20	170			205	TXUM 10SM3 20	184			210	TXUM 10S 20	184			215			
22	TXUM 7 22	185			220	TXUM 10SM3 22	200			225	TXUM 10S 22	200			230			
24	TXUM 7 24	199.5			240	TXUM 10SM3 24	216			245	TXUM 10S 24	216			250			
25	TXUM 7 25	206.5			250	TXUM 10SM3 25	224			255	TXUM 10S 25	224			260			
30	TXUM 7 30	243			300	TXUM 10SM3 30	264			305	TXUM 10S 30	264			310			

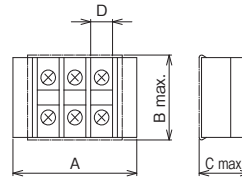
Remark: With cover and name sticker.



TXUM 7 06



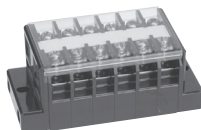
TXUM 10S 06



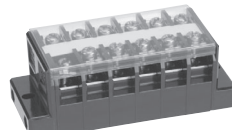
**Raised type (2/3)**

No. of pins	Type name	600V, 2mm <sup>2</sup> [20A], M3.5×8±, raised type				General mass (g)	Type name	600V, 5.5mm <sup>2</sup> [40A], M4×8.5±, raised type				General mass (g)	Type name	600V, 8mm <sup>2</sup> [50A], M5×10±, raised type				General mass (g)
		A	B	C	D			A	B	C	D			A	B	C	D	
2	TXUM 10 02	43	B=38,		35	TXUM 20 02	47	B=38,		40	TXUM 30 02	57	B=46,		80			
3	TXUM 10 03	53	C=33.1,		45	TXUM 20 03	59	C=33.1,		55	TXUM 30 03	72	C=41,		110			
4	TXUM 10 04	62	D=8		55	TXUM 20 04	70	D=9.7		70	TXUM 30 04	86	D=12.5		135			
5	TXUM 10 05	72			65	—	—			—	—	—		—				
6	TXUM 10 06	81			75	TXUM 20 06	93			100	TXUM 30 06	115		190				
8	TXUM 10 08	100			95	TXUM 20 08	116			125	TXUM 30 08	144		245				
10	TXUM 10 10	119			120	TXUM 20 10	139			155	TXUM 30 10	173		305				
12	TXUM 10 12	138			140	TXUM 20 12	162			180	TXUM 30 12	202		360				
14	TXUM 10 14	157			160	TXUM 20 14	185			210	—	—		—				
15	TXUM 10 15	167			170	TXUM 20 15	197			225	TXUM 30 15	246		440				
16	TXUM 10 16	176			180	TXUM 20 16	208			240	—	—		—				
18	TXUM 10 18	195			200	TXUM 20 18	231			265	TXUM 30 18	289		525				
20	TXUM 10 20	214			220	TXUM 20 20	254			295	TXUM 30 20	318		860				
22	TXUM 10 22	233			240	TXUM 20 22	277			320	—	—		—				
24	TXUM 10 24	252			260	TXUM 20 24	300			350	—	—		—				
25	TXUM 10 25	262			270	TXUM 20 25	312			365	—	—		—				
30	TXUM 10 30	309			320	TXUM 20 30	369			435	—	—		—				

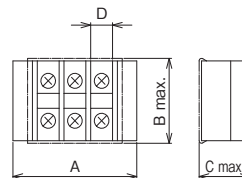
Remark: With cover and name sticker.



TXUM 10 06



TXUM 20 06



Line-up

Clutch Lock Terminal Blocks

PLC Interface Terminal Blocks

Rail Type Terminal Blocks

Assembly Terminal Blocks

Special Purpose Terminal Blocks

Terminal Block Accessories