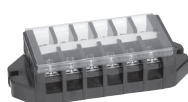


Assembled terminal block

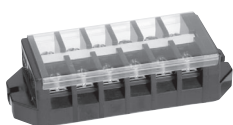
TL Series

No. of pins	600V, 2mm ² [20A], M3.5×7±, screw type					600V, 5.5mm ² [40A], M4×10±, screw type					600V, 8mm ² [50A], M5×12±, screw type							
	Type name	External dimensions (mm)				General mass (g)	Type name	External dimensions (mm)				General mass (g)	Type name	External dimensions (mm)				General mass (g)
		A	B	C	D			A	B	C	D			A	B	C	D	
2	TL 15 02	50	B=35,			40	TL 25 02	55	B=40,			55	TL 35 02	66	B=49,			95
3	TL 15 03	60	C=26,			50	TL 25 03	67	C=28,			70	TL 35 03	82	C=31,			125
4	TL 15 04	70	D=8			60	TL 25 04	79	D=95			85	TL 35 04	97	D=12.5			155
5	TL 15 05	80				70	—				—	—				—		
6	TL 15 06	90				80	TL 25 06	103				115	TL 35 06	128				210
8	TL 15 08	110				100	TL 25 08	127				145	TL 35 08	159				270
10	TL 15 10	130				125	TL 25 10	151				175	TL 35 10	190				330
12	TL 15 12	150				145	TL 25 12	175				205	TL 35 12	221				385
14	TL 15 14	170				165	TL 25 14	199				240	—				—	
15	TL 15 15	180				175	TL 25 15	211				255	TL 35 15	268				475
16	TL 15 16	190				185	TL 25 16	223				270	—				—	
18	TL 15 18	210				205	TL 25 18	247				300	TL 35 18	314				540
20	TL 15 20	230				230	TL 25 20	271				330	TL 35 20	345				600
22	TL 15 22	250				250	TL 25 22	295				360	—				—	
24	TL 15 24	270				270	TL 25 24	319				390	—				—	
25	TL 15 25	280				280	TL 25 25	331				405	—				—	
30	TL 15 30	330				335	TL 25 30	391				480	—				—	

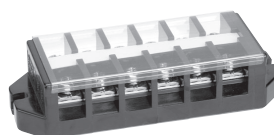
Remark: With cover and name sticker.



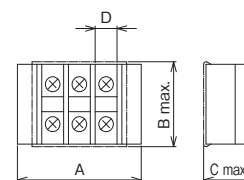
TL 15 06



TL 25 06



TL 35 06



Rating when the product is used as UL/CSA standard certified part

Basic type name	Rated voltage (V)	UL standard				CSA standard		
		Rated current (A)	Applicable wire (AWG/MCM) ^{Note 1}		FW ^{Note 2}	Rated current (A)	Applicable wire (AWG/MCM) ^{Note 1}	
			Single wire	Stranded wire				
TL 15	600	20	20 to 14	20 to 14	2	20	20 to 14	
TL 25	600	30	18 to 10	18 to 10	2	30	18 to 10	
TL 35	600	50	16 to 12	16 to 10	1	45	16 to 10	
				*8			*8	

Notes:

1. The table above is based on connection to the copper bare wire and the crimp terminal. The applicable wires with * indicates connection to the crimp terminal only. Use UL standard parts and c-UL-us standard parts for crimp terminal. Be careful for the following points:

- Connection to crimp terminal: Use the crimp terminal with insulated coating or insulate the bare crimp terminal with sleeve, tube or tape.
- Connection to two bare wires: Connect the wire with the same size and type (single wire or stranded). Do not connect the wires with different sizes and types.

2. FW1: Factory wiring, FW2: Factory wiring and field wiring