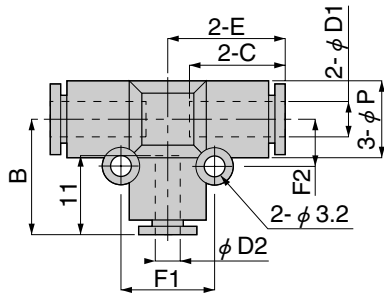


Different diameter union tee

UTD



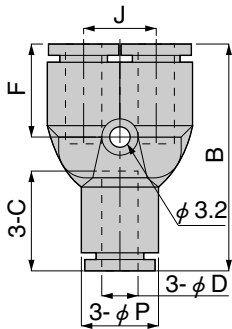
Model	Tube outer diameter $\phi$ D1	Tube outer diameter $\phi$ D2	B	$\phi$ P	C	E	F1	F2	Effective area (mm <sup>2</sup> )	Mass (g) [oz.]
<b>UTD4-3M</b>	4	3	13.1	8	11	13.05	11.2	5.6	2.4	3.3 [0.116]
<b>UTD6-4M</b>	6	4	14.6	10.5	11.6	14.95	13.2	6.6	5.3	5.1 [0.180]



Union Y  
UY



Model	Tube outer diameter $\phi$ D	B	$\phi$ P	C	J	F	Effective area (mm <sup>2</sup> )	Mass (g) [oz.]
<b>UY3M</b>	3	28	8	9.3	8	12.8	2	2.7 [0.095]
<b>UY4M</b>	4	27.6	8	11	8	12.6	2.3	3.4 [0.120]
<b>UY6M</b>	6	31	10.5	11.6	10.5	14	6.8	5.5 [0.194]



Different diameter union Y  
UYD



Model	Tube outer diameter $\phi$ D1	Tube outer diameter $\phi$ D2	B	$\phi$ P	C1	C2	J	F	Effective area (mm <sup>2</sup> )	Mass (g) [oz.]
<b>UYD4-3M</b>	4	3	27.8	8	11	9.3	8	12.8	2.1	3 [0.106]
<b>UYD6-3M</b>	6	3	30.6	10.5	11.6	11	10.5	13.6	2.5	5.3 [0.187]
<b>UYD6-4M</b>		4							4.2	

