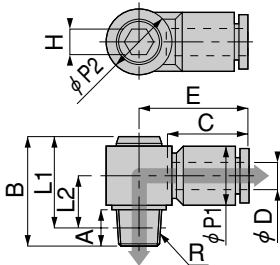


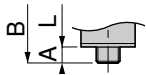
Dimensions (mm)

Hexagon socket head swing elbow SLH

CAD QF-SLH1
QF-SLH2



← Air flow



Metric thread type

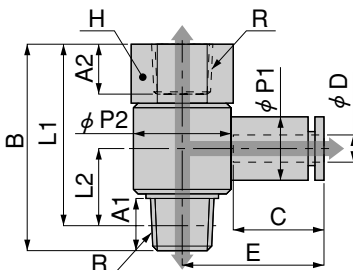
Model	Tube outer diameter ϕD	R	A	B	Note L1	Note L2	$\phi P1$	$\phi P2$	C	E	Width across flats H	Effective area (mm ²)	Mass (g) [oz.]
SLH4-M5	4	M5X0.8	3	17.5	14.5	7.5	10	10	14.9	19.8	4	2.1	6.3 [0.222]
SLH6-01	6	R1/8	8	24	20	11.5	13	14.3	17	23.7	5	7	15 [0.53]
SLH6-02		R1/4	11	27	21	12.5						7.4	22 [0.78]
SLH8-01	8	R1/8	8	27	23	12	14	17.9	18.1	26.7	8	14	22 [0.78]
SLH8-02		R1/4	11	30	24	13						12.4	28 [0.99]
SLH8-03		R3/8	12	31	24.7	13.7						13.6	37 [1.31]
SLH10-02	10	R1/4	11	34	28	15	18	21.3	20.7	30.7	10	22.9	40 [1.41]
SLH10-03		R3/8	12	35	28.7	15.7						22.6	49 [1.73]
SLH12-03	12	R3/8	12	39	32.7	17.7	21	26.3	23.4	36.4	12	37.3	68 [2.40]
SLH12-04		R1/2	15	42	33.8	18.8						32.4	85 [3.00]

Note: The L1 and L2 dimensions for the tapered thread type are the reference dimensions after the fittings are assembled.

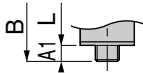
QUICK FITTINGS STANDARD TYPE

Female swing elbow SLM

CAD QF-SLM1
QF-SLM2



← Air flow



Metric thread type

Model	Tube outer diameter ϕD	Note1 R	A1	A2	B	Note2 L1	Note2 L2	$\phi P1$	$\phi P2$	C	E	Width across flats H	Effective area (mm ²)	Mass (g) [oz.]	
SLM4-M5	4	M5X0.8	2.9	5	20.1	17.2	7.2	9.9	9.8	14.9	19.9	8	1.7	7.9 [0.279]	
SLM4-01		*1/8	8	8	32.5	28.5	12	10	15.4		22.2	14	4.8	23 [0.81]	
SLM6-M5	6	M5X0.8	2.9	5	20.1	17.2	8.4	12.4	9.8	17	24	8	1.6	9 [0.32]	
SLM6-01		*1/8	8	8	32.5	28.5	12	12.5	15.4		24.2	14	8.4	24 [0.85]	
SLM6-02		*1/4	11	11	38.5	32.5	13.5		19.6		26.8	17	10.2	38 [1.34]	
SLM8-01	8	*1/8	8	8	32.5	28.5	12	14.5	15.4	18.1	26.2	14	10.3	25 [0.88]	
SLM8-02		*1/4	11	11	38.5	32.5	13.5		19.6		18.1	28.2	17	15.5	39 [1.38]
SLM8-03		*3/8	12	12	44.5	38.2	15.7		24.4		30.2	21	18.9	63 [2.22]	
SLM10-02	10	*1/4	11	11	38.5	32.5	15	18	19.6	20.2	30.5	17	15.4	42 [1.48]	
SLM10-03		*3/8	12	12	44.5	38.2	15.7		24.4		32.5	21	24.9	66 [2.33]	
SLM12-03	12	*3/8	12	12	44.5	38.2	17.2	21	24.4	23.4	35.2	21	28.3	69 [2.43]	
SLM12-04		*1/2	13	15	52.2	44	16.5		30		38.2	24	42.6	102 [3.60]	

Notes: 1. For the female thread, Rc lies in the * area, while for male thread, R is in the * area (excluding metric thread type).
2. The L1 and L2 dimensions for the tapered thread type are the reference dimensions after the fittings are assembled.