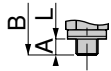
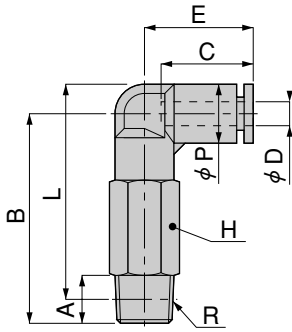


Dimensions (mm)

Long elbow TLL

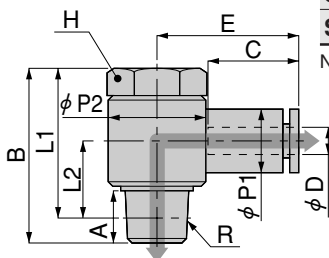


Metric thread type

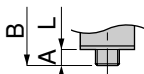
Model	Tube outer diameter ϕD	R	A	B	L ^{Note}	ϕP	C	E	Width across flats H	Effective area (mm ²)	Mass (g) [oz.]	
TLL4-M5	4	M5X0.8	3	32.3	34.3	10	14.9	18	10	1.5	8.4 [0.296]	
TLL4-01		R1/8	8	35.3	36.3					4.2	17 [0.60]	
TLL6-01	6	R1/8	8	38	40.3	12.5	16.8	19.8	12	10	26 [0.92]	
TLL6-02		R1/4	11	41	41.2						14	39 [1.38]
TLL6-03		R3/8	12	43.3	43.2						17	62 [2.19]
TLL8-01	8	R1/8	8	43.5	46.8	14.5	18.2	22.7	14	16.5	37 [1.31]	
TLL8-02		R1/4	11	46.5	47.7						17	66 [2.33]
TLL8-03		R3/8	12	48.3	49.2						17	66 [2.33]
TLL10-02	10	R1/4	11	54.5	57.2	17.5	20.2	26.2	17	30	65 [2.29]	
TLL10-03		R3/8	12	55.5	57.9						17	74 [2.61]
TLL10-04		R1/2	15	60	60.6						21	121 [4.27]
TLL12-02	12	R1/4	11	60	64.5	21	23.4	29.4	21	39.1	112 [3.95]	
TLL12-03		R3/8	12	61	65.2						21	107 [3.77]
TLL12-04		R1/2	15	64	66.3						21	123 [4.34]

Note: The L dimensions for the tapered thread type are the reference dimensions after the fittings are assembled.

Swing elbow SL



← Air flow



Metric thread type

Model	Tube outer diameter ϕD	R	A	B	Note L1	Note L2	$\phi P1$	$\phi P2$	C	E	Width across flats H	Effective area (mm ²)	Mass (g) [oz.]			
SL4-M5	4	M5X0.8	3	17.2	14.2	6.2	10	9.8	14.9	21.2	8	2	7.5 [0.265]			
SL4-M6		M6X1	3.9	18.2	14.3	6.3						3.4	7.4 [0.261]			
SL4-01		R1/8	8	27	23	12						15.4	22.2	14	4.6	21 [0.74]
SL6-M5	6	M5X0.8	3	17.2	14.2	7.4	12.5	9.8	17	23.1	8	1.9	8.3 [0.293]			
SL6-M6		M6X1	3.9	18.2	14.3	7.5						3.3				
SL6-01		R1/8	8	27	23	12						15.4		24.2	14	10.9
SL6-02	R1/4	11	31.5	25.5	13.5	19.6	26.8	17	11.6	36 [1.27]						
SL8-01	8	R1/8	8	27	23	12	14.5	15.4	18.1	26.2	14	14.9	23 [0.81]			
SL8-02		R1/4	11	31.5	25.5	13.5						19.6	28.2	17	19.7	38 [1.34]
SL8-03		R3/8	12	36	29.7	15.7						24.4	30.2	21	21.4	60 [2.12]
SL10-02	10	R1/4	11	31.5	25.5	15	18	19.6	20.2	30.5	17	23.1	41 [1.45]			
SL10-03		R3/8	12	36	29.7	15.7						24.4	32.5	21	31.5	63 [2.22]
SL12-03	12	R3/8	12	36	29.7	17.2	21	24.4	23.4	35.2	21	39.7	66 [2.33]			
SL12-04		R1/2	13	40.2	32	16.5						30	38.2	24	49.8	97 [3.42]
SL16-03	16	R3/8	12	46.1	39.8	21.3	25	28	24.1	36.6	24	64.2	92 [3.25]			
SL16-04		R1/2	15	48.3	40.1	21.6						30	62.1	105 [3.70]		

Note: The L1 and L2 dimensions for the tapered thread type are the reference dimensions after the fittings are assembled.