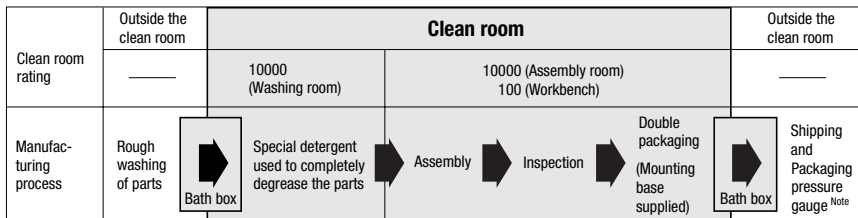


Highly sensitive pressure balance control inside clean rooms

STAINLESS REGULATORS

- Optimum for carrier gas control in various kinds of solvents and pure water circuits, for blow pressure control, for clean air and gas pressure control used in liquid crystal or semiconductor-related processes, for other food product-related lines requiring corrosion resistance, and for other non-grease type or non-oil type lines.
- Contamination-controlled manufacturing process.



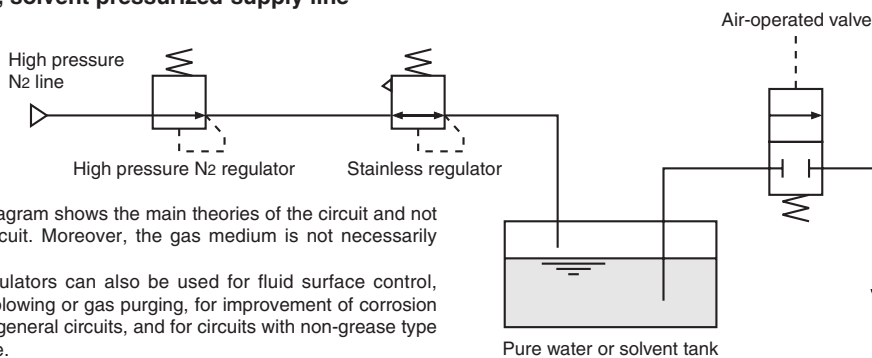
Note: The pressure gauge is just packed in single packaging at outside of the clean room.



- A push-lock mechanism is used in the pressure regulating knob.
- A mounting base for easy mounting is available as an option.
- The part that contacts gas uses SUS316, fluoro resin, or fluoro rubber materials.
- An optional pressure gauge is available.

Application Example

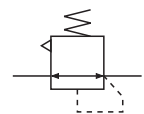
- Pure water, solvent pressurized-supply line



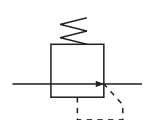
- ※ This circuit diagram shows the main theories of the circuit and not the actual circuit. Moreover, the gas medium is not necessarily limited to N₂.
- ※ Stainless regulators can also be used for fluid surface control, including air blowing or gas purging, for improvement of corrosion resistance in general circuits, and for circuits with non-grease type or non-oil type.

Symbols

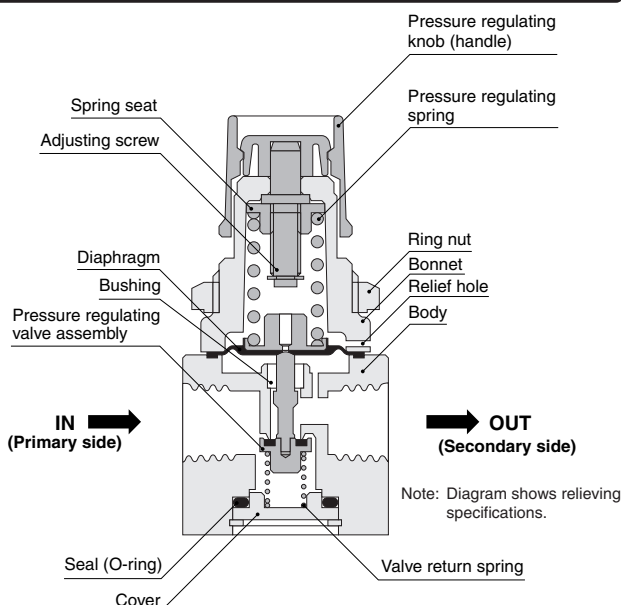
- Relief



- Non-relief



Operation Principle and Inner Construction



Major Parts and Materials

Parts	Materials
Body	SUS316
Pressure regulating knob (handle)	Plastic (ABS)
Bonnet	Plastic (PBT)
Diaphragm	Fluoro rubber (FKM), or fluoro rubber (FKM) with fluoro resin (PTFE) lining
Pressure regulating spring	Piano wire (zinc plated)
Seal	Fluoro rubber (FKM)
Pressure regulating valve assembly	SUS316 + fluoro rubber (FKM), or SUS316 + fluoro rubber (FKM) with fluoro resin (PTFE) lining
Cover	SUS316
Bushing	Fluoro plastic (PTFE)
Valve return spring	SUS316
Adjusting screw	Brass (nickel plated)
Spring seat	Brass (nickel plated)
Plug (supplied)	SUS316
Ring nut	Mild steel (nickel plated)
Mounting base (optional)	SPCC (nickel plated)