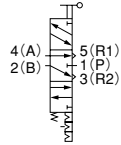


# MANUAL VALVES

## Lever-operated Type 3-position, 5-port

### Symbol

5-port (Exhaust center)



250-4H, 2503-4H

### Specifications

Item	Basic model	250-4H	2503-4H
Port size		Rc1/4	Rc3/8
Media		Air	
Operating pressure range	MPa (kgf/cm <sup>2</sup> ) [psi.]	0.1~0.9 {0~9.2} [15~131]	
Proof pressure	MPa (kgf/cm <sup>2</sup> ) [psi.]	1.35 {13.8} [196]	
Operating temperature range (atmosphere and media)	°C [°F]	5~60 [41~140]	
Effective area	mm <sup>2</sup>	15	
Flow coefficient	Cv	0.76	
Valve stroke	mm [in.]	1.6 [0.063]	
Lubrication		Not required	
Mass	kg [lb.]	0.6 [1.3]	

### Order Code

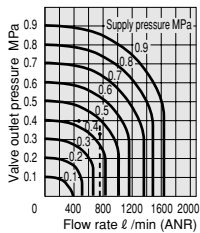


Basic model

Basic model	Port size
250-4H	Rc1/4
2503-4H	Rc3/8

Examples:  
250-4H  
2503-4H

### Flow Rate

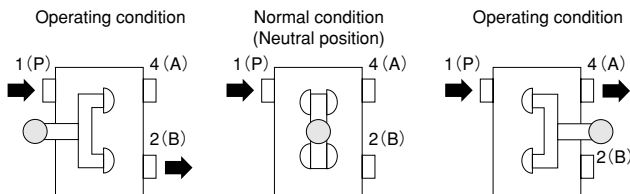


1MPa = 145psi., 1 l / min = 0.0353ft<sup>3</sup>/min.

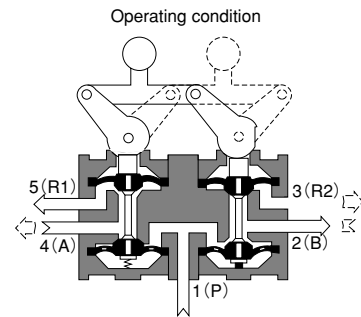
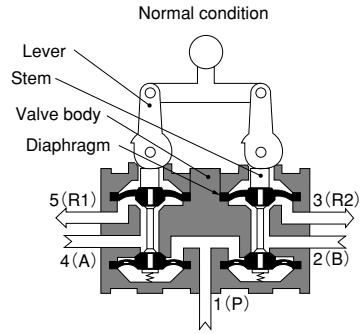
#### How to read the graph

When the supply pressure is 0.5MPa [73psi.] and the flow rate is 740 l / min [26.1ft<sup>3</sup>/min.] (ANR), the valve outlet pressure becomes 0.4MPa [58psi.].

### Lever Position and Air Path



### Inner Construction, Major Parts and Materials



Parts	Materials
Body	Aluminum alloy (anodized)
Stem	Brass
Diaphragm	Synthetic rubber

### Dimensions (mm)

