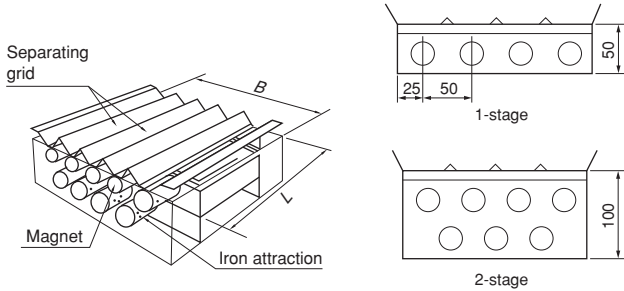


## Model KGM MAGNETIC BAR UNIT



KGM-2025



### [Application]

A unit consisting of powerful permanent magnets. These units are essential for removal of iron from bulk materials in the fine particle and chemical industries to enhance the work efficiency.

### [Features]

- The grid layout exhibits the excellent iron-removal performance.
- Easy installation for a wide range of applications.
- Two-stage models having a higher iron-removal capacity are also available.

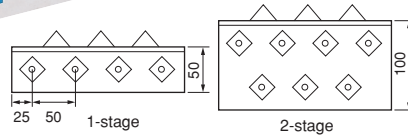
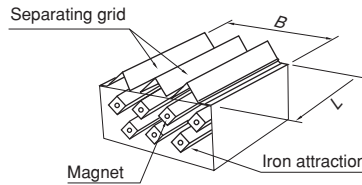
Model	Type	Flow Capacity	Number of Magnets	Dimensions		Mass
				B	L	
KGM-2020	1-stage	6m <sup>3</sup> /h	4	200 (7.87)	200 (7.87)	3.5kg/ 7.7 lb
KGM-2020W	2-stage		7			6.0kg/13.2 lb
KGM-2025	1-stage	8m <sup>3</sup> /h	4	250 (9.84)	250 (9.84)	4.2kg/ 9.2 lb
KGM-2025W	2-stage		7			6.5kg/14.3 lb
KGM-2525	1-stage	10m <sup>3</sup> /h	5	250 (9.84)	250 (9.84)	5.0kg/11.0 lb
KGM-2525W	2-stage		9			8.4kg/18.5 lb
KGM-2530	1-stage	12m <sup>3</sup> /h	5	300 (11.8)	300 (11.8)	5.6kg/12.3 lb
KGM-2530W	2-stage		9			9.5kg/21.0 lb
KGM-3030	1-stage	14m <sup>3</sup> /h	6	300 (11.8)	300 (11.8)	6.7kg/14.7 lb
KGM-3030W	2-stage		11			11.2kg/24.6 lb
KGM-3040	1-stage	18m <sup>3</sup> /h	6	400 (15.7)	400 (15.7)	9.0kg/19.8 lb
KGM-3040W	2-stage		11			15.7kg/34.6 lb
KGM-4040	1-stage	24m <sup>3</sup> /h	8	400 (15.7)	400 (15.7)	11.0kg/24.2 lb
KGM-4040W	2-stage		15			19.8kg/43.6 lb
KGM-4050	1-stage	30m <sup>3</sup> /h	8	500 (19.6)	500 (19.6)	13.1kg/28.8 lb
KGM-4050W	2-stage		15			23.6kg/52.0 lb

※Surface magnetic flux density 130 mT (1300 G) max.

## Model KGM-H POWERFUL MAGNETIC UNIT



KGM-H2025



### [Application]

Suitable for removing iron from bulk materials by strong magnetic force. Two-stage models having a higher iron-removal capacity are also available.

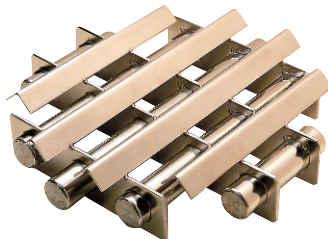
Model	Type	Flow Capacity	Number of Magnets	Dimensions		Mass
				B	L	
KGM-H2020	1-stage	4.5m <sup>3</sup> /h	4	200 (7.87)	200 (7.87)	3.0kg/6.61 lb
KGM-H2020W	2-stage		7			5.0kg/11.0 lb
KGM-H2025	1-stage	6.0m <sup>3</sup> /h	4	250 (9.84)	250 (9.84)	3.6kg/7.90 lb
KGM-H2025W	2-stage		7			6.0kg/13.2 lb

※Surface magnetic flux density 320 mT (3200 G) max.

## Model KGM-C MAGNETIC BAR UNIT



KGM-CF25 (With outer frame)



KGM-C25 (Without outer frame)

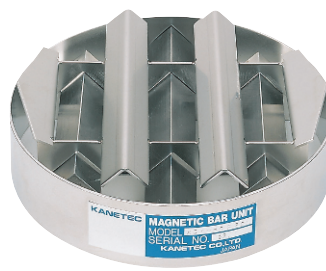
### [Application]

A round type that can easily be installed at the feeding port of machines and hoppers or chutes as a gate for iron removal.

Model	Type	Flow Capacity	Dimensions		Mass
			Frame Dia	Height	
KGM-C20	Without outer frame	4.5m <sup>3</sup> /h	φ200 (7.87)	55 (2.16)	2.1kg/4.63 lb
KGM-CF20	With outer frame			60 (2.36)	2.3kg/5.07 lb
KGM-C25	Without outer frame	7.0m <sup>3</sup> /h	φ250 (9.84)	55 (2.16)	3.3kg/7.27 lb
KGM-CF25	With outer frame			60 (2.36)	3.6kg/7.90 lb

※Surface magnetic flux density 130 mT (1300 G) max.

## Model KGM-HC POWERFUL MAGNETIC UNIT



KGM-HCF20 (With outer frame)



KGM-HC20 (Without outer frame)

A round type combined with powerful magnetic bars that can easily be set on hoppers and chutes.

Model	Type	Flow Capacity	Dimensions		Mass
			Frame Dia	Height	
KGM-C20	Without outer frame	4.5m <sup>3</sup> /h	φ200 (7.87)	60 (2.36)	2.1kg/4.63 lb
KGM-CF20	With outer frame				2.3kg/5.07 lb
KGM-C25	Without outer frame	7.0m <sup>3</sup> /h	φ250 (9.84)	60 (2.36)	3.3kg/7.27 lb
KGM-CF25	With outer frame				3.6kg/7.90 lb

※Surface magnetic flux density 130 mT (1300 G) max.

MAGNETIC TOOLS FOR WELDING OPERATION  
 LIFTING MAGNET  
 MAGBORE  
 CHIP & SLUDGE TRANSPORTERS  
 ENVIRONMENTAL EQUIPMENT  
 MAGNETIZERS AND DEMAGNETIZERS FOR TRANSPORTATION  
 MAGNETIC SEPARATORS  
 HIGH-GRADE MAGNETIC SEPARATORS  
 MEASURING TOOLS  
 MEASURING INSTRUMENTS  
 MAGNETIC MATERIALS