

Model KM-W MAGNETIC HOLDER



Holding Power
200N
KM-06W

Holding Power
1300N
KM-12W

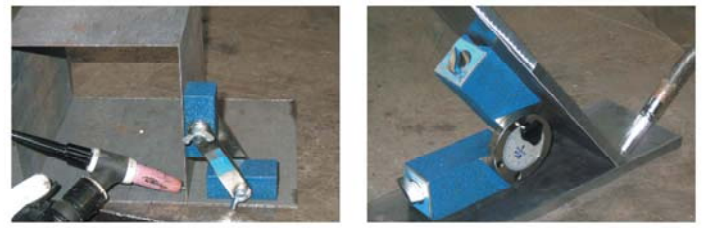
Usable as a hinge of thin plates and simple jig for welding operations.

[Application]
Suitable for tentative holding during drilling and assembly.

- [Features]**
- Two magnets as a pair for easy angle setting.
 - An angle scale provided. (KM-12W)
 - The magnetic force can be turned on and off by operating the lever. (KM-12W)
 - The V-groove allows the holder to be attached to certain poles and curved surfaces in addition to the flat surface. (KM-12W)

| Model | Holding Power | Holder Dimensions | | | Angle | Length | Mass |
|--------|----------------|-------------------|---------------|--------------|----------------|--------|---------------|
| | | Width | Length | Height | | | |
| KM-06W | 200N (20kgf) | 26 (1.02) | 60 (2.36) | 25 (0.98) | 129 (5.07) | Free | 0.7kg/1.54 lb |
| KM-12W | 1300N (130kgf) | 50 (1.96) | 117 (4.60) | 55 (2.16) | 273 (10.75) | | 4.5kg/9.92 lb |

※The holding power applies to SS400, thickness 10mm and ground surface.



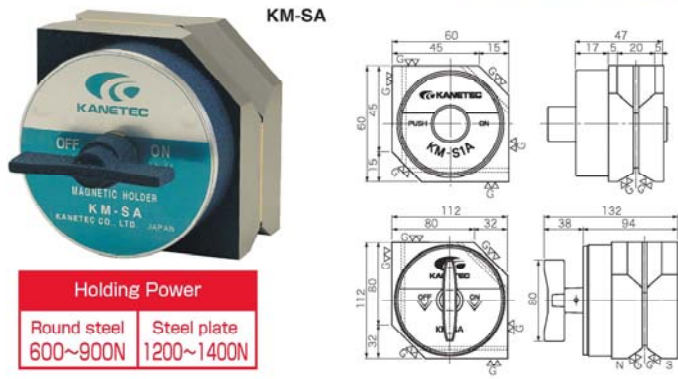
Model KM-SA HEXAGONAL MAGNETIC HOLDER



Holding Power
Round steel 200~300N
Steel plate 200~600N

[Application]
These holders provide a strong holding power for tentative holding during welding and tentative assembly. These holders can also be used as a block.

- [Features]**
- The holding angle can be set to 45°, 90° and 135°.
 - The small type is equipped with a pushbutton and the large type with a rotary handle for turning on and off the magnetic force.



| Model | Holding Power | | Dimensions | Mass |
|--------|--|--|----------------------------------|--------------------|
| | Round Steel | Steel Plate | | |
| KM-SA | 600~900N (60~90kgf) 150~200N (15~20kgf) | 1200~1400N (120~140kgf) 800~1000N (80~100kgf) | 112(4.40) × 112(4.40) × 94(3.70) | 6.0kg/ 13.2 lb |
| KM-S1A | 200~300N (20~30kgf) 50~70N (5~7kgf) | 200~600N (20~60kgf) 100~350N (10~35kgf) | 60(2.36) × 60(2.36) × 42(1.65) | 0.85kg/ 1.87 lb |

※The holding power applies to iron plate, SS400, 10mm thickness, and ground-surface.
Note: The holding power in [] is for attraction on one face in the case of double-face attraction.

Model KM-S HEXAGONAL MAGNETIC HOLDER

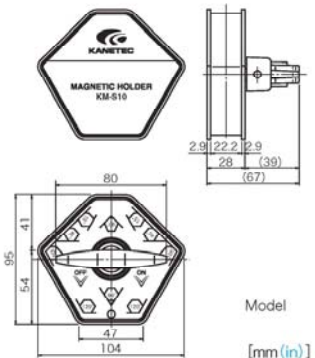


Holding Power
Steel plate 160~260N
KM-S10

Holding Power
Steel plate 250~450N
KM-S13

[Application]
Usable to temporarily hold and assemble workpieces during welding. These holders hold workpieces firmly.

- [Features]**
- The workpiece holding angle can be selected from 15°, 45°, 60°, 90°, 105° and 120°.
 - The magnetic force can be turned on and off.
 - The holding power on steel plates is about the same as when both faces of KM-S9 and S12 are used and at angles other than 105°, the holding power does not drop when two faces are used.



| Model | Holding Power | Dimensions | Mass |
|--------|---------------------|----------------------------------|---------------|
| | Steel Plate | | |
| KM-S10 | 150~250N (15~25kgf) | 104(4.09) × 95(3.74) × 67(2.63) | 0.9kg/1.98 lb |
| KM-S13 | 250~450N (25~45kgf) | 132(5.19) × 120(4.72) × 73(2.87) | 1.6kg/3.52 lb |

※The holding power applies to iron plate, SS400, 10mm thickness, and ground-surface.