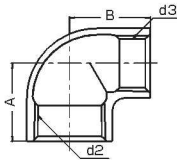


## 形状・寸法

## ■ 径違いエルボ

RL

304(SCS 13A)

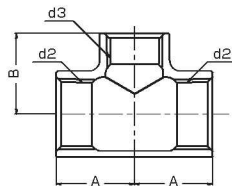


呼び径		ねじ		寸法(mm)		304 在庫
A (mm)	B (inch)	d2	d3	A	B	
8×6	$\frac{1}{4} \times \frac{1}{8}$	Rc $\frac{1}{4}$	Rc $\frac{1}{8}$	18	18	●
10×8	$\frac{3}{8} \times \frac{1}{4}$	Rc $\frac{3}{8}$	Rc $\frac{1}{4}$	20	22	●
15×8	$\frac{1}{2} \times \frac{1}{4}$	Rc $\frac{1}{2}$	Rc $\frac{1}{4}$	24	24	●
15×10	$\frac{1}{2} \times \frac{3}{8}$	Rc $\frac{1}{2}$	Rc $\frac{3}{8}$	26	25	●
20×10	$\frac{3}{4} \times \frac{3}{8}$	Rc $\frac{3}{4}$	Rc $\frac{3}{8}$	28	28	●
20×15	$\frac{3}{4} \times \frac{1}{2}$	Rc $\frac{3}{4}$	Rc $\frac{1}{2}$	29	30	●
25×15	$1 \times \frac{1}{2}$	Rc1	Rc $\frac{1}{2}$	32	33	●
25×20	$1 \times \frac{3}{4}$	Rc1	Rc $\frac{3}{4}$	34	35	●
32×20	$1\frac{1}{4} \times \frac{3}{4}$	Rc $1\frac{1}{4}$	Rc $\frac{3}{4}$	38	40	●
32×25	$1\frac{1}{4} \times 1$	Rc $1\frac{1}{4}$	Rc1	40	42	●
40×25	$1\frac{1}{2} \times 1$	Rc $1\frac{1}{2}$	Rc1	41	45	●
40×32	$1\frac{1}{2} \times 1\frac{1}{4}$	Rc $1\frac{1}{2}$	Rc $1\frac{1}{4}$	45	48	●
50×25	$2 \times 1$	Rc2	Rc1	44	51	●
50×32	$2 \times 1\frac{1}{4}$	Rc2	Rc $1\frac{1}{4}$	48	54	●
50×40	$2 \times 1\frac{1}{2}$	Rc2	Rc $1\frac{1}{2}$	52	55	●

## ■ 径違いチーズ

RT

304(SCS 13A)

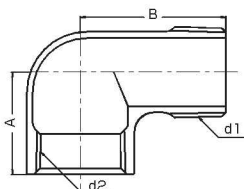


呼び径		ねじ		寸法(mm)		304 在庫
A (mm)	B (inch)	d2	d3	A	B	
8×6	$\frac{1}{4} \times \frac{1}{8}$	Rc $\frac{1}{4}$	Rc $\frac{1}{8}$	18	18	●
10×8	$\frac{3}{8} \times \frac{1}{4}$	Rc $\frac{3}{8}$	Rc $\frac{1}{4}$	20	22	●
15×8	$\frac{1}{2} \times \frac{1}{4}$	Rc $\frac{1}{2}$	Rc $\frac{1}{4}$	24	24	●
15×10	$\frac{1}{2} \times \frac{3}{8}$	Rc $\frac{1}{2}$	Rc $\frac{3}{8}$	26	25	●
20×10	$\frac{3}{4} \times \frac{3}{8}$	Rc $\frac{3}{4}$	Rc $\frac{3}{8}$	28	28	●
20×15	$\frac{3}{4} \times \frac{1}{2}$	Rc $\frac{3}{4}$	Rc $\frac{1}{2}$	29	30	●
25×15	$1 \times \frac{1}{2}$	Rc1	Rc $\frac{1}{2}$	32	33	●
25×20	$1 \times \frac{3}{4}$	Rc1	Rc $\frac{3}{4}$	34	35	●
32×20	$1\frac{1}{4} \times \frac{3}{4}$	Rc $1\frac{1}{4}$	Rc $\frac{3}{4}$	38	40	●
32×25	$1\frac{1}{4} \times 1$	Rc $1\frac{1}{4}$	Rc1	40	42	●
40×25	$1\frac{1}{2} \times 1$	Rc $1\frac{1}{2}$	Rc1	41	45	●
40×32	$1\frac{1}{2} \times 1\frac{1}{4}$	Rc $1\frac{1}{2}$	Rc $1\frac{1}{4}$	45	48	●
50×25	$2 \times 1$	Rc2	Rc1	44	51	●
50×32	$2 \times 1\frac{1}{4}$	Rc2	Rc $1\frac{1}{4}$	48	54	●
50×40	$2 \times 1\frac{1}{2}$	Rc2	Rc $1\frac{1}{2}$	52	55	●

## ■ ストリートエルボ

SL

304(SCS 13A)



呼び径		ねじ		寸法(mm)		304 在庫
A (mm)	B (inch)	d1	d2	A	B	
8	$\frac{1}{4}$	R $\frac{1}{4}$	Rc $\frac{1}{4}$	19	30	●
10	$\frac{3}{8}$	R $\frac{3}{8}$	Rc $\frac{3}{8}$	23	35	●
15	$\frac{1}{2}$	R $\frac{1}{2}$	Rc $\frac{1}{2}$	27	40	●
20	$\frac{3}{4}$	R $\frac{3}{4}$	Rc $\frac{3}{4}$	32	47	●
25	1	R1	Rc1	38	54	●
32	$1\frac{1}{4}$	R $1\frac{1}{4}$	Rc $1\frac{1}{4}$	46	62	●
40	$1\frac{1}{2}$	R $1\frac{1}{2}$	Rc $1\frac{1}{2}$	48	68	●
50	2	R2	Rc2	57	79	●