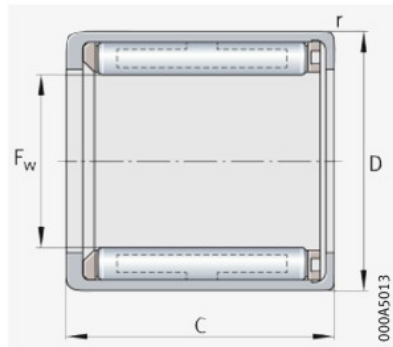


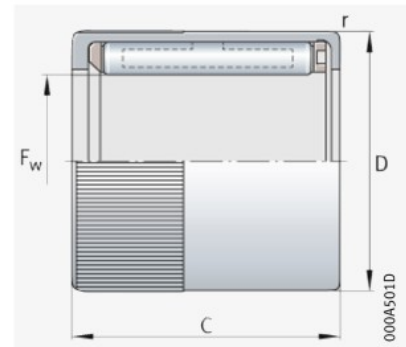


Drawn cup roller clutches

Without bearing arrangement
With or without knurling



HF, HF.-KF
Without knurling



HF.-R, HF.-KF-R
With knurling

$F_w = 3 - 35 \text{ mm}$

Main dimensions				Permissible torque M_d per Nm	Limiting speeds		Mass $m \approx g$	Designation ▶ 1014 1.12 ▶ 1014 1.13	Suitable drawn cup needle roller bearings for radial support ▶ 886	
F_w	D	C -0,3	r min.		$n_{GW}^{1)}$ min^{-1}	$n_{GA}^{2)}$ min^{-1}			plastic springs	steel springs
3	6,5	6	0,3	0,18	45 000	8 000	1	HF0306-KF	-	HK0306-TV
	6,5	6	0,3	0,06	45 000	8 000	1	HF0306-KF-R	-	HK0306-TV
4	8	6	0,3	0,34	34 000	8 000	1	HF0406-KF	-	HK0408
	8	6	0,3	0,1	34 000	8 000	1	HF0406-KF-R	-	HK0408
6	10	12	0,3	1,76	23 000	13 000	3	HF0612-KF	HF0612	HK0608
	10	12	0,3	0,6	23 000	13 000	3	HF0612-KF-R	HF0612-R	HK0608
8	12	12	0,3	3,15	17 000	12 000	3,5	HF0812-KF	HF0812	HK0808
	12	12	0,3	1	17 000	12 000	3,5	HF0812-KF-R	HF0812-R	HK0808
10	14	12	0,3	5,3	14 000	11 000	4	HF1012-KF	HF1012	HK1010
12	18	16	0,3	12,2	11 000	8 000	11	-	HF1216	HK1212
14	20	16	0,3	17,3	9 500	8 000	13	-	HF1416	HK1412
16	22	16	0,3	20,5	8 500	7 500	14	-	HF1616	HK1612
18	24	16	0,3	24,1	7 500	7 500	16	-	HF1816	HK1812
20	26	16	0,3	28,5	7 000	6 500	17	-	HF2016	HK2010
25	32	20	0,3	66	5 500	5 500	30	-	HF2520	HK2512
30	37	20	0,3	90	4 500	4 500	36	-	HF3020	HK3012
35	42	20	0,3	121	3 900	3 900	40	-	HF3520	HK3512

medias ▶ <https://www.schaeffler.de/std/1E86>

1) Limiting speed for rotating shaft.

2) Limiting speed for rotating outer ring.