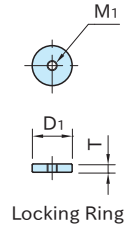
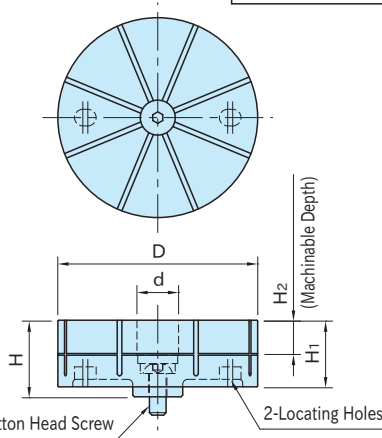
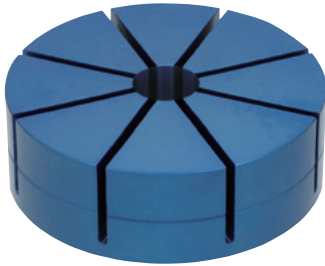


CP126

JAWS FOR EXTERNAL FORM HOLDING



Jaw	Locking Ring
A7075 Aluminum Blue	S45C Steel Black oxide finish

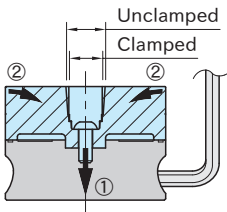
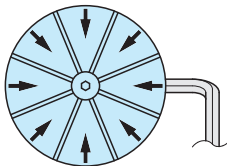


Part Number	D	d	H ₁	H ₂	M	H	M ₁	D ₁	T	Weight (kg)	Proper CP125 Clamps
CP126-06501	65	21	25	10	M 8×20L Across Flats5	29	M5×0.8	20	4	0.2	CP125-06501
CP126-09001	90	25	35	15	M10×20L Across Flats6	40	M6×1	24	5	0.5	CP125-09001
CP126-12001	120	25	40	20	M10×25L Across Flats6	46					CP125-12001
CP126-16001	160	29	45	25	M12×25L Across Flats8	52	M8×1.25	28	6	2.2	CP125-16001

Furnished Parts

- 1 pc. of O-ring
- 1 pc. of Locking Ring
- 1 pc. of Hex Socket Button Head Screw

Features



- The diaphragm clamping mechanism allows securely clamping a part with 8 jaw sections.
- 0.15mm clamping stroke of each jaw section is perfect for clamping of lost-wax parts, die-cast parts, extruded parts, solid-drawn parts, prefinished parts, etc.

- ① When the cam cylinder is tightened, the central bottom part of the jaw is pulled down.
- ② At the same time the 8 jaw sections tilt toward the center to clamp the external form of a part.

