

CG

TAPERED KNOBS (Self-Locking)



ELESA Original Design P.390, I.307



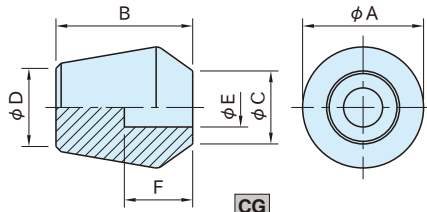
CG

(Self-Locking)



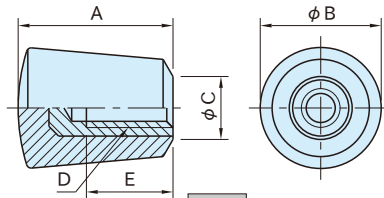
CG-M

(Threaded Insert)



CG

(Self-Locking)



CG-M

(Threaded Insert)

Type	Knob	Threaded Insert
CG	Phenolic plastic Glossy Finish Black	-
CG-M		Brass

CG (Self-Locking)

Part Number	A	B	C	D	E	F	Weight (g)
CG25	25	28	15	16	8	14	12
CG30	30	34	18	19	10	19	20
CG35	35	39	20	22	12	21	32
CG40	40	45	23	25	14	24	47

CG-M (Threaded Insert)

Part Number	A	B	C	D	E	Weight (g)
CG20M	20	15	7	M5×0.8	12	6
CG25MA	26	20	10	M6×1	16	12
CG25M				M8×1.25	15	14

The self-locking knob provides easy push-fit mounting on a standard bright steel bar finished to h9 tolerance.

- Working temperature : Between -20°C and 110°C