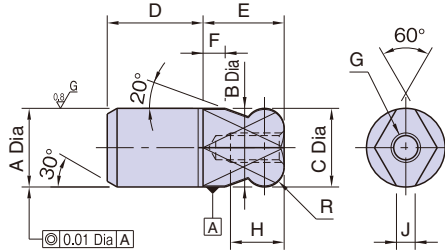


BJ792

DIAMOND LOCATING PINS



Material : SK95 steel
Heat Treat : Quenched and tempered
Precision ground



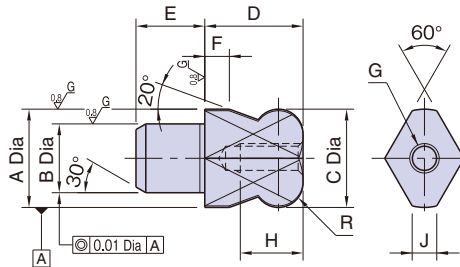
Part Number	A (n6)	B (g6)	C ($\begin{smallmatrix} 0.01 \\ -0.05 \end{smallmatrix}$)	D	E	F	G	H	J	R	Weight (g)
BJ792-08001	8	8	8	10	8	2	M3x0.5	6	1.9	R2	5
BJ792-10001	10	10	10	13	10	2.5				R2.5	11
BJ792-12001	12	12	12	15	12	3	M4x0.7	8	2.5	R3	17
BJ792-16001	16	16	16	20	16	4	M5x0.8	10	4.3	R4	44

BJ793

DIAMOND LOCATING PINS



Material : SK95 steel
Heat Treat : Quenched and tempered
Precision ground



Part Number	A (g6)	B (n6)	C ($\begin{smallmatrix} 0.01 \\ -0.05 \end{smallmatrix}$)	D	E	F	G	H	J	R	Weight (g)
BJ793-10001	10	7	10	10	7	2.5	M3x0.5	6	2.5	R2.5	5
BJ793-12001	12	8	12	12	8	3	M4x0.7	8		R3	8
BJ793-16001	16	12	16	16	12	4	M5x0.8	10	4.3	R4	23

Features:

The round head of these pins facilitates setting a workpiece.
Use NKL Pin Extractors to pull out these pins.

How To Use

