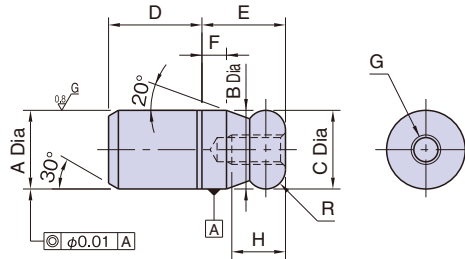


# BJ790

# ROUND LOCATING PINS

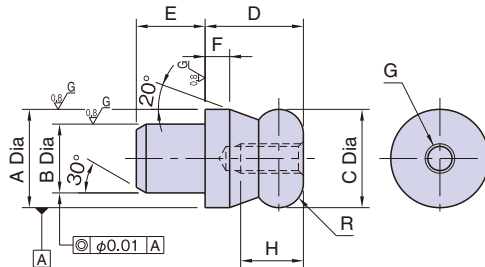


Material : SK95 steel  
Heat Treat : Quenched and tempered  
Precision ground

Part Number	A (n6)	B (g6)	C (-0.01/-0.05)	D	E	F	G	H	R	Weight (g)
<b>BJ790-08001</b>	8	8	8	10	8	2	M3x0.5	6	R2	6
<b>BJ790-10001</b>	10	10	10	13	10	2.5		6	R2.5	12
<b>BJ790-12001</b>	12	12	12	15	12	3	M4x0.7	8	R3	21
<b>BJ790-16001</b>	16	16	16	20	16	4	M5x0.8	10	R4	51

# BJ791

# ROUND LOCATING PINS



Material : SK95 steel  
Heat Treat : Quenched and tempered  
Precision ground

Part Number	A (g6)	B (n6)	C (-0.01/-0.05)	D	E	F	G	H	R	Weight (g)
<b>BJ791-10001</b>	10	7	10	10	7	2.5	M3x0.5	6	R2.5	7
<b>BJ791-12001</b>	12	8	12	12	8	3	M4x0.7	8	R3	11
<b>BJ791-16001</b>	16	12	16	16	12	4	M5x0.8	10	R4	30

### Features:

The round head of these pins facilitates setting a workpiece.  
Use NKL Pin Extractors to pull out these pins.

### How To Use

