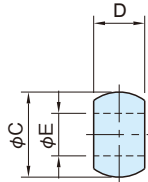
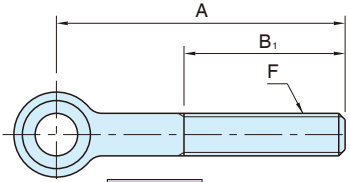


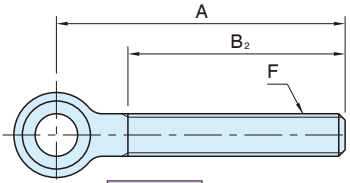
# BJ761-N / BJ761-A EYE BOLTS



**Body**  
 Steel (S45C)  
 Quenched and tempered  
 Black oxide finish



**BJ761-N**



**BJ761-A**

**BJ761-N** **BJ761-A**

Standard		Fully Threaded			A	B <sub>1</sub>	C	D	E ( <sup>0</sup> <sub>-0.2</sub> )	F	
Part Number	Weight (g)	Part Number	B <sub>2</sub>	Weight (g)							
BJ761-06001N	13	-	-	-	35	20	14	7	6	M 6x1	
BJ761-06002N	16	BJ761-06002A	40	16	50	25					
BJ761-08011N	25	-	-	-	35	20	18	9	8	M 8x1.25	
BJ761-08001N	30	BJ761-08001A	37	30	50	30					
BJ761-08002N	40	BJ761-08002A	62	40	75	45	20	12	10	M10x1.5	
BJ761-10011N	45	-	-	-	50						30
BJ761-10001N	60	BJ761-10001A	60	60	75	50	25	14	12	M12x1.75	
BJ761-10002N	80	BJ761-10002A	85	80	100						
BJ761-12011N	73	-	-	-	50	30	60	32	17	16	M16x2
BJ761-12001N	95	BJ761-12001A	57	95	75						
BJ761-12002N	120	-	-	-	100	55	40	22	18	M20x2.5	
BJ761-12003N	125	BJ761-12003A	107	125	125						
BJ761-16011N	210	BJ761-16011A	80	210	100	50	65	40	22	18	M20x2.5
BJ761-16001N	250	-	-	-	125	60					
BJ761-16002N	300	BJ761-16002A	130	300	150	65	40	22	18	M20x2.5	
BJ761-20011N	340	BJ761-20011A	75	340	100						
BJ761-20001N	400	-	-	-	125	65	40	22	18	M20x2.5	
BJ761-20002N	485	BJ761-20002A	125	485	150						

## Application Example

