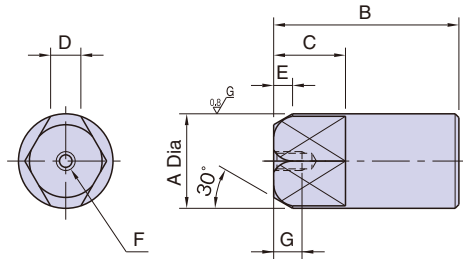


BJ722**DIAMOND LOCATING PINS**

Material : SK95 steel

Heat Treat : Quenched and tempered (Rc 55 - 60)

Precision ground

Part Number	A (h6)	B	C	D	E	F	G	Weight (g)
BJ722-06001	6	20	9	1.8	3	M3x0.5	6	3
BJ722-08001	8	25	11	2.2				7
BJ722-10001	10	30	13	3				13
BJ722-12001	12	34	14	3.5	4	M5x0.8	10	25
BJ722-14001	14	38	15	4				40
BJ722-16001	16	42	16	5				60
BJ722-18001	18	46	17	5.5	5			85
BJ722-20001	20	47		6				100
BJ722-22001	22	49	19	7				140
BJ722-25001	25			8				165

Use NKL Pin Extractors to pull out these pins.