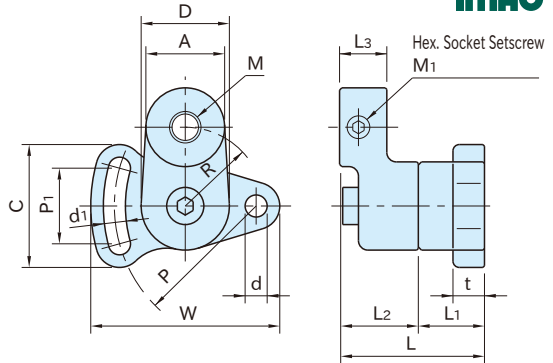


# BAT-R, BAT-A

# VERTICAL SLOTTED TIGHTENERS



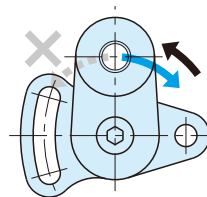
Part Number	Body	Arm	Locking Element
<b>BAT45R</b>	Cast iron (FCD450) Powder baking finish	Steel (1 S50C) Powder baking finish	S50C
<b>BAT45A</b>	Black	Black	
<b>BAT90R</b>	Cast iron (FC250) Powder baking finish	Cast iron (FCD450) Powder baking finish	S45C
<b>BAT90A</b>	Black	Black	

Part Number		No. of Teeth	M	A	R	W	C	d	d1	P	P1	D	L2	L3	M1
<b>BAT45R</b>	<b>BAT45A</b>	15	M10×1.5	25	25	60	39	7.5	7	45	24	28	25	15	M5×0.8 - 6L
<b>BAT90R</b>	<b>BAT90A</b>	24	M20×2.5	50	55	117.5	70	12	11	90	40	55	46	28	M8×1.25-14L

<b>BAT45R</b>		<b>BAT90R</b>		(Adjustable Type)				<b>BAT45A</b>		<b>BAT90A</b>				(Swing Type)				
Part Number	L	t	L1	Weight (g)	Part Number	Max. Swing Angle	Max. Tension	L	t	L1	Weight (g)	Part Number	Max. Swing Angle	Max. Tension	L	t	L1	Weight (g)
<b>BAT45R</b>	46	10	21	300	<b>BAT45A</b>	70°	45.8	46	10	21	300	<b>BAT45R</b>	70°	45.8	46	10	21	300
<b>BAT90R</b>	71	15	25	1,550	<b>BAT90A</b>	60°	145	85	15	39	1,900	<b>BAT90R</b>	60°	145	85	15	39	1,900

## Notes

- Caution on **BAT45A** **BAT90A** (Swing Type)
- Initial tension is "0"N.
- Do not apply a counterclockwise force to the arm when it is engaged with the locking element, to avoid possible damage to the return spring.



Clockwise force applied to the arm allows generating tension (max. torsion angle and max. tension must be considered in installation).