

# BJ200(Heavy)

## DOWNTHRUST BACKSTOPS



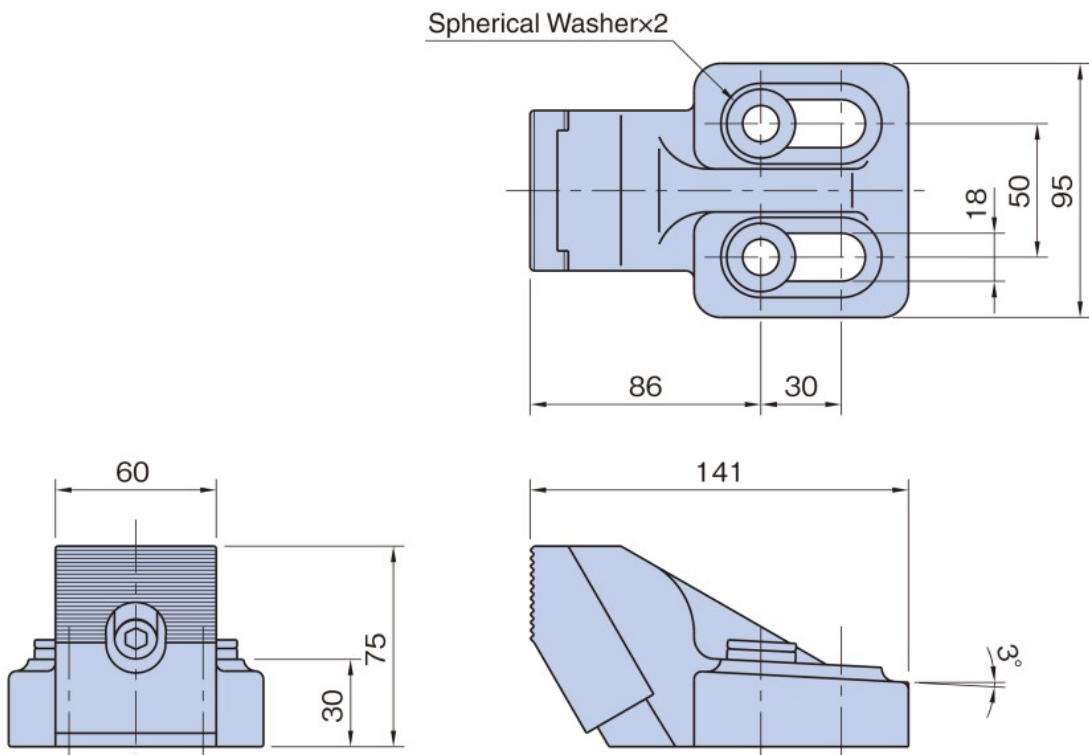
### [Body]

Material : FCD450 cast iron  
Finish : Black powder baking

### [Jaw]

Material : S50C steel  
Heat treat : Induction hardened  
(jaw serrations)  
Finish : Black oxide

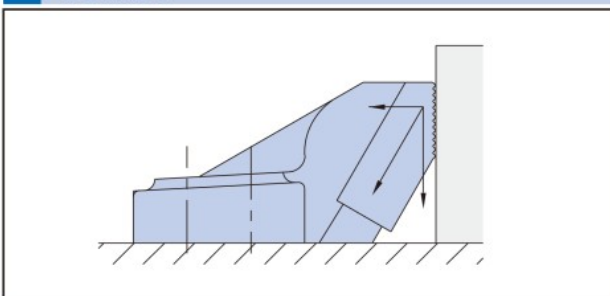
Spherical Washerx2



Part Number	Load Capacity (N)	Jaw-Moving Load (N)	Weight (kg)
<b>BJ200-16075</b>	60,000	280	2.4

2 spherical washers for both M12 and M16 screws are included.

### Feature:



These backstops work to provide downholding force and prevent part lift.