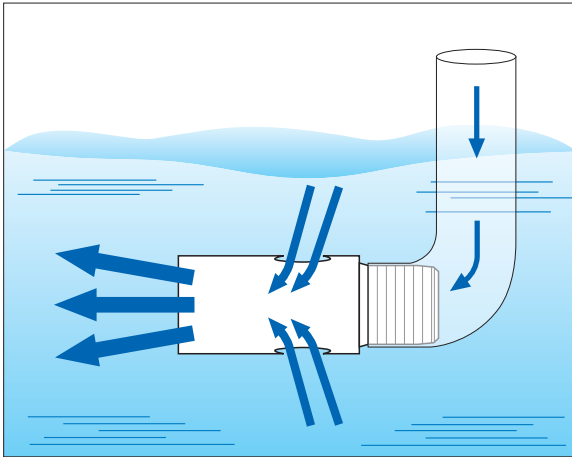


# Ejector Nozzle for Solution Agitation

# EJX



### [Features]

- Taking in surrounding liquid, EJX series solution agitation nozzle spouts out 3–4 times more volume than the amount supplied.
- Small size and simple structure suitable for multiple-nozzle arrangement.

### [Standard Pressure]

0.05 MPa

### [Applications]

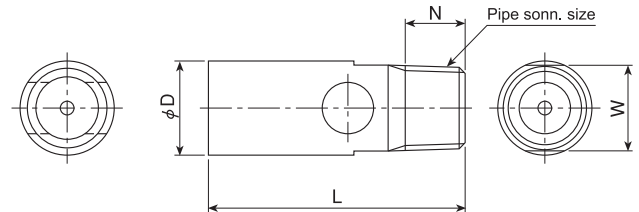
- Solution agitation, preventing deposition, uniformizing concentration and pH
- Cleaning in liquids
- Submerged etching • Plating

Solid Stream

## EJX series

EJX series						
Structure	• One-piece structure.					
Material	• S303 (S304 for sizes 1M and 1½M) • PP (PVC for sizes 1M and 1½M)					
Pipe conn. size	Dimensions (mm)				Mass (g)	
	L	W	φD	N	S303 S304	PP PVC
⅛M	30	10 (11)*2	11	7	11	1.3 *1
¼M	48	14 (16)*2	16	10.5	26	3.2 *1
⅜M	72	22	24	11	80	10
½M	93	27	31	14	170	20
¾M	126	34	42	15	420	48
1M	172	60	76.3 (80)*2	18	2,200	460
1½M	212	80	89.1 (90)*2	20	3,200	540

\*1) Sizes ⅛M and ¼M made of PP are injection molded.  
 \*2) Dimensions in ( ) shows those of plastic EJX series nozzles.



[Note] Appearance and dimensions may differ slightly depending on materials and nozzle codes.

Supplied Volume Code	Pipe Conn. Size	Supplied Water Volume (ℓ/min)						Outlet Water Volume (ℓ/min) [Reference value]						Free Pass. Dia. (mm)
		0.03 MPa	0.05 MPa	0.1 MPa	0.15 MPa	0.2 MPa	0.3 MPa	0.03 MPa	0.05 MPa	0.1 MPa	0.15 MPa	0.2 MPa	0.3 MPa	
1	⅛M	0.85	1.10	1.56	1.91	2.20	2.69	2.2	3.1	5.0	6.6	9.2	10	1.5
4	¼M	3.10	4.00	5.66	6.93	8.00	9.80	8.1	11	18	24	34	38	2.8
9	⅜M	6.97	9.00	12.7	15.6	18.0	22.0	18	26	41	54	75	85	4.2
16	½M	12.4	16.0	22.6	27.7	32.0	39.2	33	46	72	95	134	151	5.7
30	¾M	23.2	30.0	42.4	52.0	60.0	73.5	61	86	140	180	250	280	7.7
90	1M	69.7	90.0	127	156	180	220	180	260	410	540	760	850	13.3
160	1½M	124	160	226	277	320	392	330	460	720	950	1,340	1,510	17.5

## How to order

Please inquire or order for a specific nozzle using this coding system.

⟨Example⟩... ⅜MEJX1-9PP

⅜M	EJX	1-	9	PP
Pipe Conn. Size			Supplied Volume Code	Material
<input type="checkbox"/> ⅛M <input checked="" type="checkbox"/> ⅜M <input type="checkbox"/> ½M <input type="checkbox"/> ¾M <input type="checkbox"/> 1M <input type="checkbox"/> 1½M			<input type="checkbox"/> 1 <input checked="" type="checkbox"/> 9 <input type="checkbox"/> 160	<input type="checkbox"/> S303 <input type="checkbox"/> S304 (for sizes 1M and 1½M) <input checked="" type="checkbox"/> PP <input type="checkbox"/> (PP-IN for sizes ⅛M and ¼M) <input type="checkbox"/> PVC (for sizes 1M and 1½M)