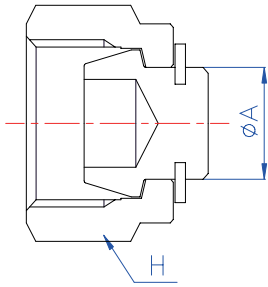
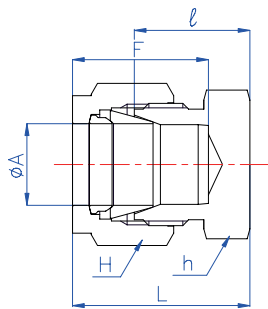


<b>BI-LoK</b>	<b>DBA</b>	<b>Plug Fractional tube</b>
---------------	------------	---------------------------------



Part No.	A (Tube O. D)		H (HEX)	
	in	mm	in	mm
DBA 1	1/16	1.59	5/16	7.94
DBA 2	1/8	3.18	7/16	11.11
DBA 3	3/16	4.76	1/2	12.7
DBA 4	1/4	6.35	9/16	14.29
DBA 5	5/16	7.94	5/8	15.88
DBA 6	3/8	9.53	11/16	17.46
DBA 8	1/2	12.7	7/8	22.23
DBA 10	5/8	15.88	1	25.4
DBA 12	3/4	19.05	1-1/8	28.58
DBA 14	7/8	22.23	1-1/4	31.75
DBA 16	1	25.4	1-1/2	38.1

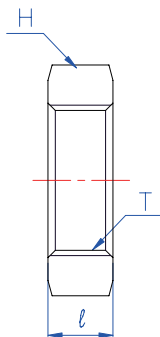
<b>BI-LoK</b>	<b>DCA</b>	<b>Cap Caps end of fractional tube</b>
---------------	------------	--



H : See dimensional data (Last page)

Part No.	A (Tube O. D)		h (HEX)		$\ell$	L	F
	in	mm	in	mm	mm	mm	mm
DCA 1	1/16	1.59	5/16	7.94	11.0	15.0	8.9
DCA 2	1/8	3.18	7/16	11.11	13.5	20.2	13.0
DCA 3	3/16	4.76	7/16	11.11	15.0	21.7	13.8
DCA 4	1/4	6.35	1/2	12.7	16.0	23.5	15.4
DCA 5	5/16	7.94	9/16	14.29	17.0	24.5	16.3
DCA 6	3/8	9.53	5/8	15.88	18.5	26.0	17.0
DCA 8	1/2	12.7	13/16	20.64	19.5	29.8	23.0
DCA 10	5/8	15.88	15/16	23.81	20.0	30.3	24.6
DCA 12	3/4	19.05	1-1/16	26.99	21.5	31.8	24.6
DCA 14	7/8	22.23	1-3/16	30.16	23.9	34.1	26.1
DCA 16	1	25.4	1-3/8	34.93	26.1	38.7	31.6

<b>BI-LoK</b>	<b>DNN</b>	<b>Lock Nut for bulkhead type</b>
---------------	------------	---------------------------------------



Part No.	H (HEX)		T	$\ell$
	in	mm	UNF	mm
DNN 1	5/16	7.94	10-32	4.0
DNN 2	1/2	12.7	5/16-20	4.5
DNN 3	9/16	14.29	3/8-20	5.5
DNN 4	5/8	15.88	7/16-20	6.0
DNN 5	11/16	17.46	1/2-20	6.0
DNN 6	3/4	19.05	9/16-20	6.0
DNN 8	15/16	23.81	3/4-20	7.0
DNN 10	1-1/16	26.99	7/8-20	8.0
DNN 12	1-3/16	30.16	1-20	9.0
DNN 14	1-3/8	34.93	1-1/8-20	10.8
DNN 16	1-5/8	41.28	1-5/16-20	11.9