



## Flat Type

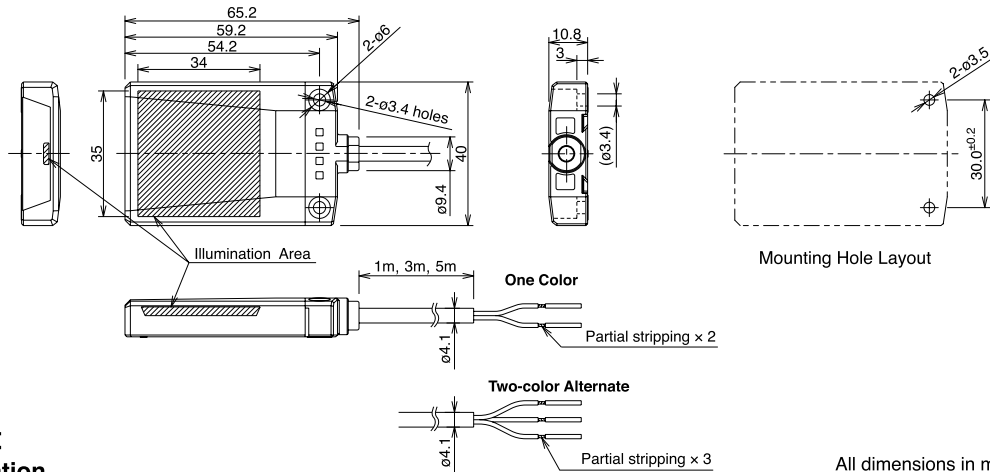
### Types

Package Quantity: 1

Shape	Cable	Ordering Type No.	Illumination Color
Flat One Color 	1m	<b>LH1D-H2HQ4C10</b> ①	Specify a color code in place of ① in the Type No. A: amber G: green PW: pure white R: red S: blue W: white Y: yellow
	3m	<b>LH1D-H2HQ4C30</b> ①	
	5m	<b>LH1D-H2HQ4C50</b> ①	
Flat Red/Green 2-color Alternate 	1m	<b>LH1D-H2HQ4C10RG</b>	R (red) / G (green) 2-color alternate illumination
	3m	<b>LH1D-H2HQ4C30RG</b>	
	5m	<b>LH1D-H2HQ4C50RG</b>	

• For orange, specify "A" (for amber).

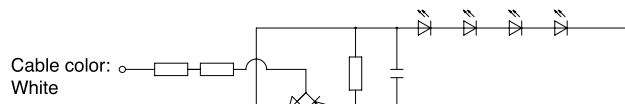
### Dimensions



All dimensions in mm.

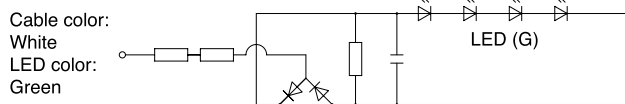
### Internal Circuit

#### • One-color Illumination

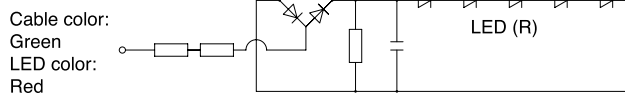


Cable color: Brown


#### • Two-color Alternate Illumination



Cable color: Brown (common)



### Replacement Parts

Shape	Material	Ordering Type No.	Lens Color
Lens (flat type) 	Polyarylate	<b>LH9Z-1DLH2</b> ①	For flat type. Specify a color code in place of ① in the Type No. A: amber C: clear G: green R: red S: blue Y: yellow Note: Use C (clear) lens for R / G (red/green alternate), W (white), or PW (pure white) illumination.