





# ø12 AP Series Miniature Pilot Lights

## AP2M Series (ø12)

Shape	Operating Voltage	Part No.	Ordering No.	Package Quantity	Lens Color Code
 	6V DC ±5%	AP2M266②	AP2M266②	1	Specify a lens color code in place of ② in the Part No.  A: amber G: green R: red W: white Y: yellow
			AP2M266②PN10	10	
	12V DC ±10%	AP2M211②	AP2M211②	1	
			AP2M211②PN10	10	
	24V DC ±10%	AP2M222②	AP2M222②	1	
			AP2M222②PN10	10	
 	6V DC ±5%	AP2M166②	AP2M166②	1	
			AP2M166②PN10	10	
	12V DC ±10%	AP2M111②	AP2M111②	1	
			AP2M111②PN10	10	
	24V DC ±10%	AP2M122②	AP2M122②	1	
			AP2M122②PN10	10	

•Degree of protection: IP65 (IEC 60529)

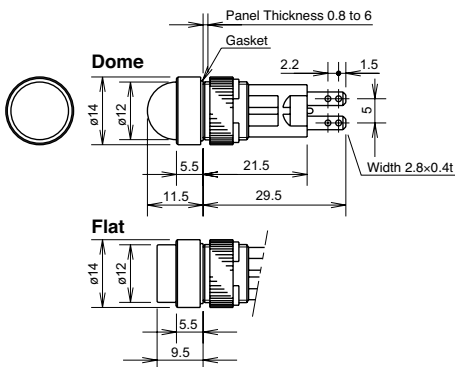
•The LED cannot be replaced.

Note: The voltage for Y (yellow) is 24V AC/DC.

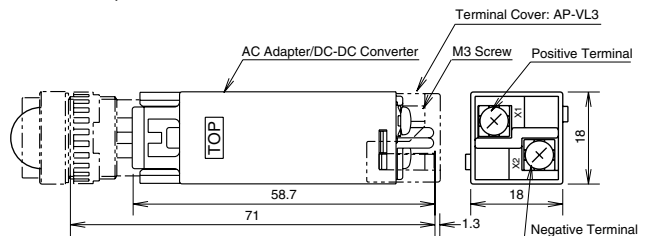
### AC Adapter, DC-DC Converter

Unit	Operating Voltage	Part No.	Applicable Pilot Light	Package Quantity
AC Adapter	100/110V AC	AP2-016D	AP6M266② (dome: 6V DC) AP6M166② (flat: 6V DC)	1
	200/220V AC	AP2-026D		
DC-DC Converter	110V DC (90 to 140V DC)	AP2-016DD		

### Dimensions



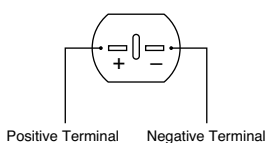
With AC Adapter or DC-DC Converter



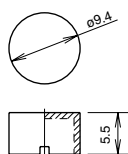
Terminal cover is not supplied.  
When using terminal covers, order AP-VL3 terminal covers.

### Terminal Arrangement

(Bottom View)

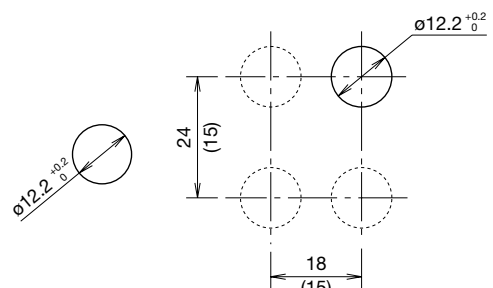


### Marking Plate



Engraving depth: 0.5 mm maximum  
Marking plate material: White acrylic

### Panel Cut-out / Mounting Hole Layout



Note: (15) is the minimum mounting hole layout without AC adapter or flasher unit.

All dimensions in mm.